

Transformation through Sensors, Software and Services

Fascinating technologies for everyday life



BOSCH



Digital - Bosch's stated position in shaping the new world

*“ The connected world is not some distant dream. It's already here.
We want to connect the virtual and the physical world. ”*



Sensor



Software



Services

Bosch as world's leading IoT Company

Robert Bosch Engineering and Business Solutions

Collaboration with Microsoft

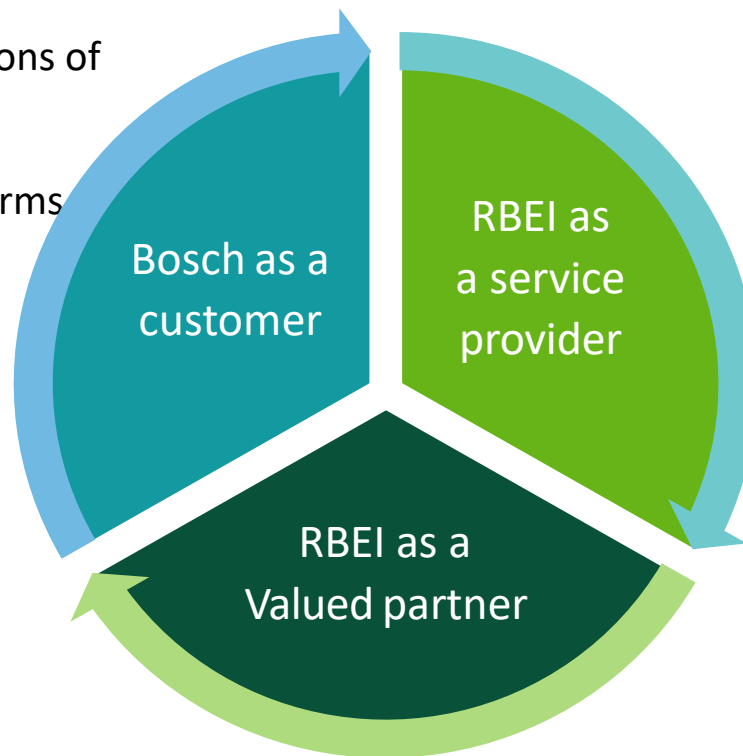
- ▶ One of the largest global implementations of MS Technologies

- ▶ Communication & collaboration platforms

- ▶ Technology partnerships – Gold partner & CSP

- ▶ GTM partner for MS in India, EU & UK

- ▶ Co-operation in new areas like IoT, AR/VR & Blockchain



- ▶ Core Implementation Partner for Cloud Solutions

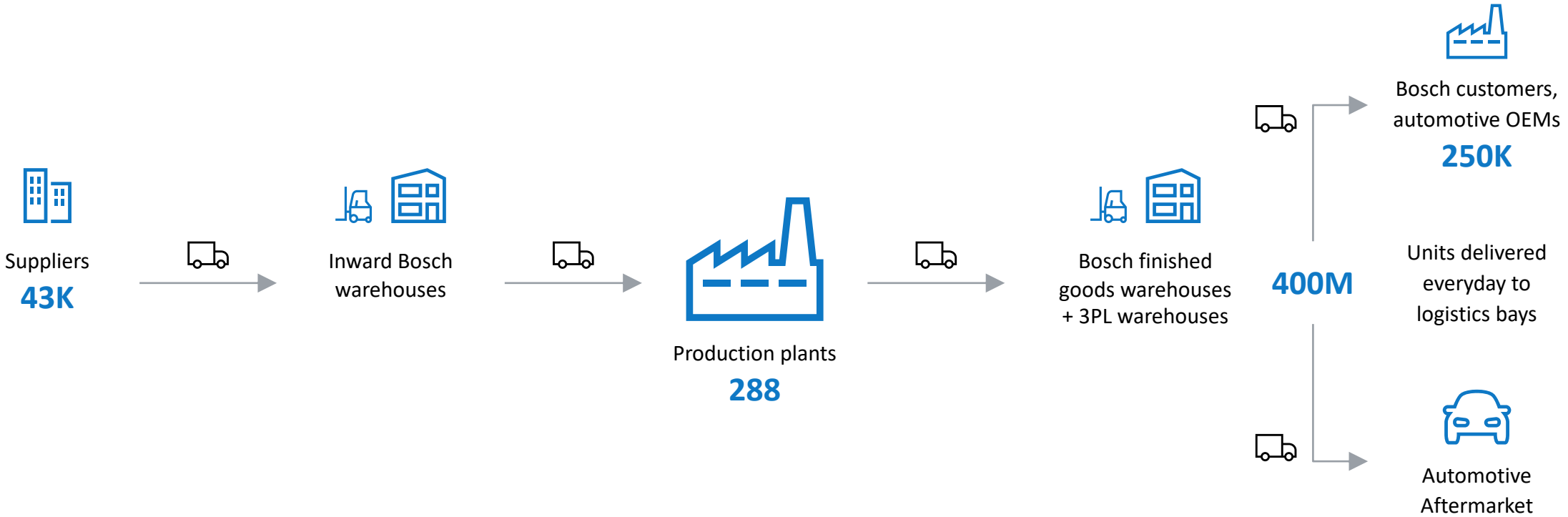
- ▶ Dedicated ODC in India and Europe

- ▶ Fast Track Centre Factory for on-premise to cloud migration


- ▶ IOT / Azure Based projects – Connected Car, Remote Monitoring

Bosch

We are a globally operating company



**100**
Countries

**42.1B**
Purchasing volume

**280**
Manufacturing sites

**800**
Warehouses worldwide

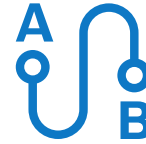
Lack of visibility magnifies issues



Delivery mismatch of parts/components



Lack of visibility in supply chain



Shipment Traceability



Poor warehouse productivity



Multiple data systems



High Lead time to respond to customer queries

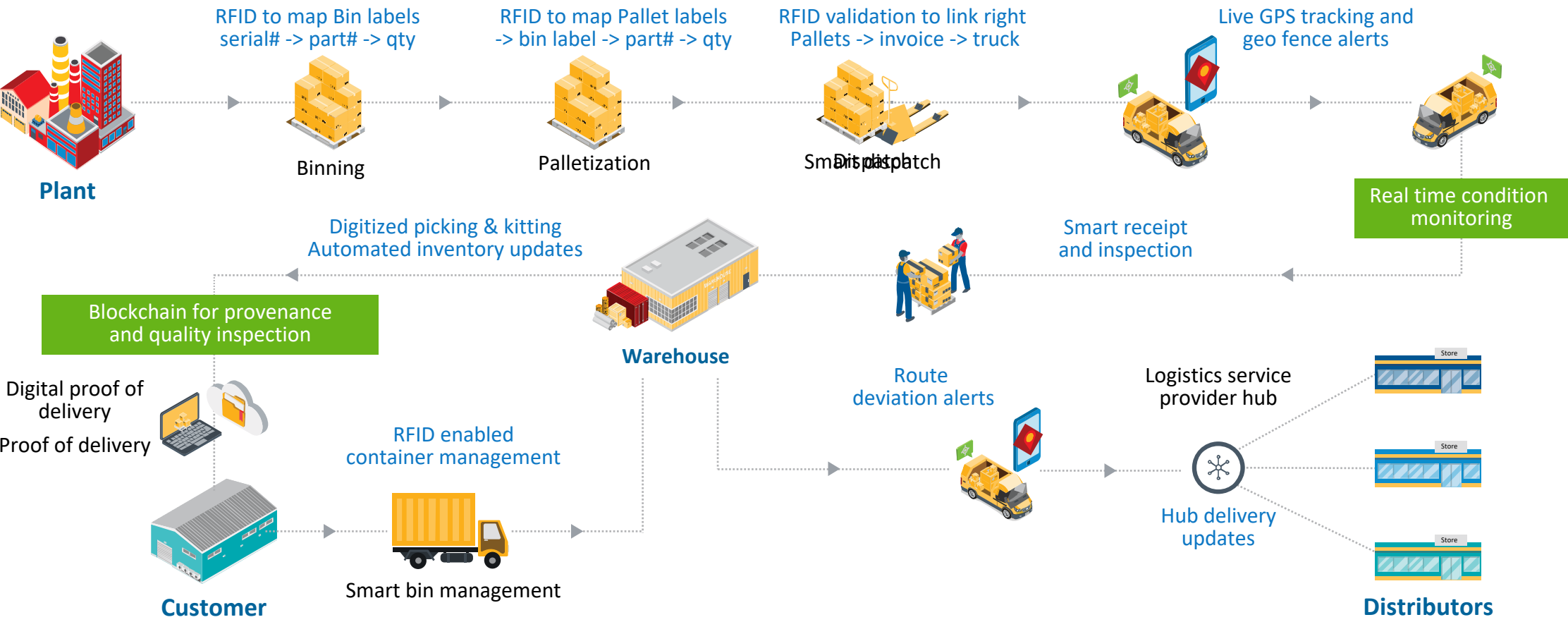


High Inventory buffer



Manual inspection – error prone

String it all together, an integrated value chain



Trac360 – Azure platform for traceability

Over a period of two years

Harnessing Azure services

Enable granular tracking of goods, carriers, and processes across the supply chain



02

Plants

05

Warehouses

17

OEMs

1000

Parts

12M

SKUs

25000

Trips

18000

Dealers



100% On-time delivery since rollout



10% Reduction in warehouse inventory



30% Reduction in premium freight expenditure



trueFood+





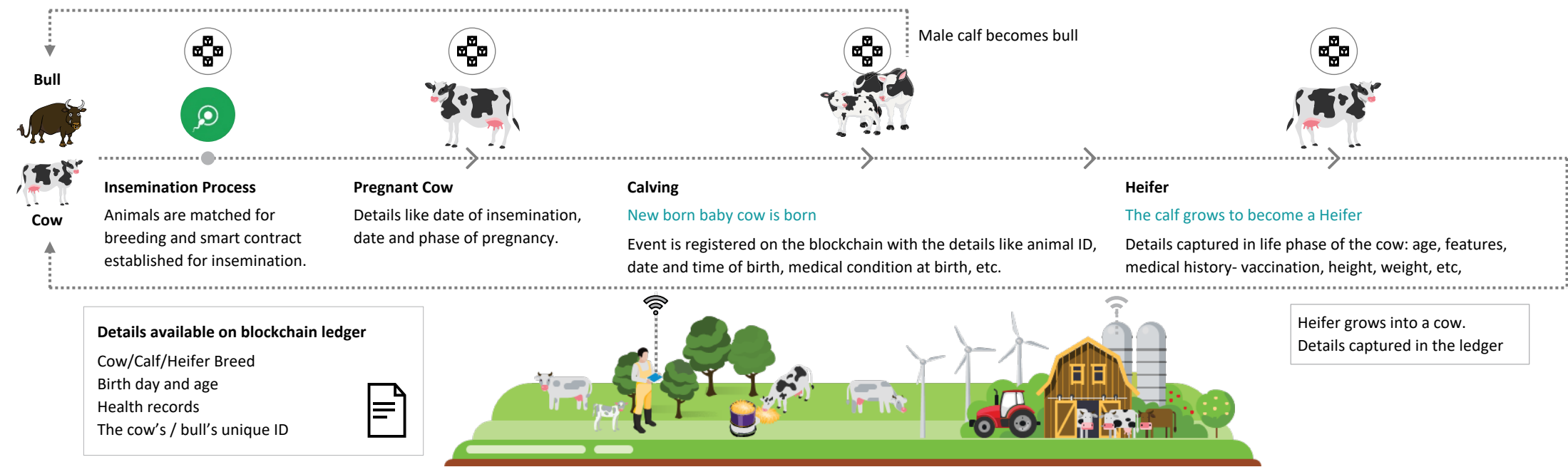
Crypto Cow

IoT, Blockchain, AI – A Game Changer


Crypto Cow

Business need


To have information on the origin and the quality of the dairy product by tracking how the cow was bred & also aid in seamless transfer of ownership of cow




Benefits



Real time tracking of the health of a cow and change of ownership



Introduce transparency in the origin and quality of the dairy products



Creating a more transparent market for cow trading by tracking its breed and lineage.

trueFood+

Decentralized Data Market Place

FARMER



- The proof of fair and sustainable farming can help them get certifications seamlessly and hence establish/ elevate their brand.
- Trade/ lease assets like animals, animal supplies, farm equipment, raw materials etc.

PRODUCER

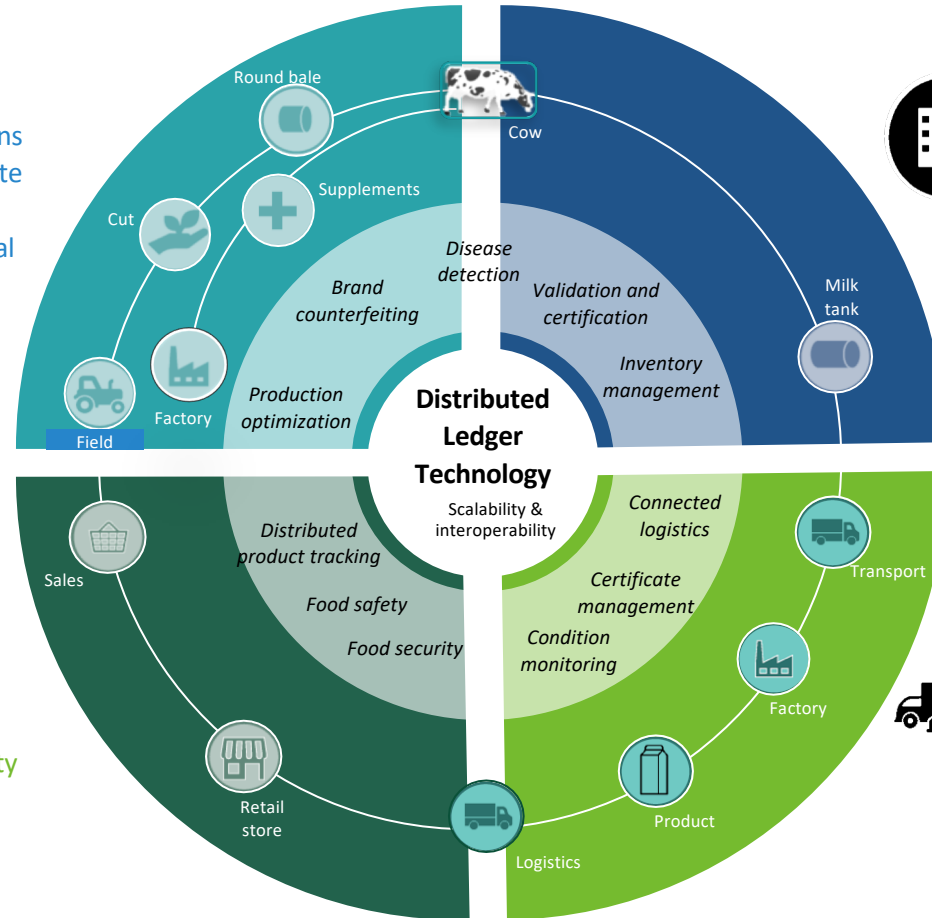


- The ability to prove to the end consumer the Safety of product, fair processing practices, certifications
- Establish their brand reputation and trust among its customers by providing end to end transparency

RETAILER



- The ability of optimizing its inventory between stores and reduce wastage related losses.
- Protect itself against product recalls (brand and bottom-line implications) due to quality issues by ensuring quality of sourcing its inventory.



SUPPLY CHAIN

- Digitization and seamless yet secure access to relevant stakeholders of e – bills of lading, certificate of transfer of ownership, custom clearances and other paper documents.
- Establish the proof of quality and freshness by proper condition monitoring and a log of any abnormal events like increase in temperature or pressure etc.



Invented
for life

“

...but most importantly, because we walk in your shoes:

*with over **135 years** of experience in the industry, we, at Bosch, speak your language and understand your needs, thus providing solutions designed in partnership with you & delivered to address the realities of your business environment*

– Robert Bosch

”

