



# IoT Continuum: Evolving Business

**Shirley Strachan**

GM

IoT Device Experience Team

Microsoft Asia



# IoT in Action, Taipei, November 20th —Event Agenda

|  |               |
|--|---------------|
| Executive Keynote  | 9:30–10:15am  |
| Business Transformation In Action  | 10:15–11:00am |
| Architecting the Intelligent Edge to Create Scalable Repeatable Solutions          | 11:00–12:00pm |
| Lunch Networking Break   | 12:00–1:00pm  |
| Unlocking IoT's Potential  | 1:00–1:45pm   |
| Developing an IoT Security Practice for Durable Innovation                         | 1:45–2:15pm   |
| Partner Case Study: Innodisk Corporation   | 2:15–2:45pm   |
| Afternoon Networking Break   | 2:45–3:30pm   |
| Evolving IoT with Mixed Reality, AI, Drone and Robotic Technology                  | 3:30–4:00pm   |
| Partner Case Study: AAEON Technology, Inc.   | 4:00–4:30pm   |
| Activating Microsoft Resources & Programs to Accelerate Time to Market and Co-sell | 4:30–5:00pm   |
| Partner-Customer Networking & Sponsored Partner Solution Showcase                  | All day       |

# Our Goal



**IoT Community**



**Partners**

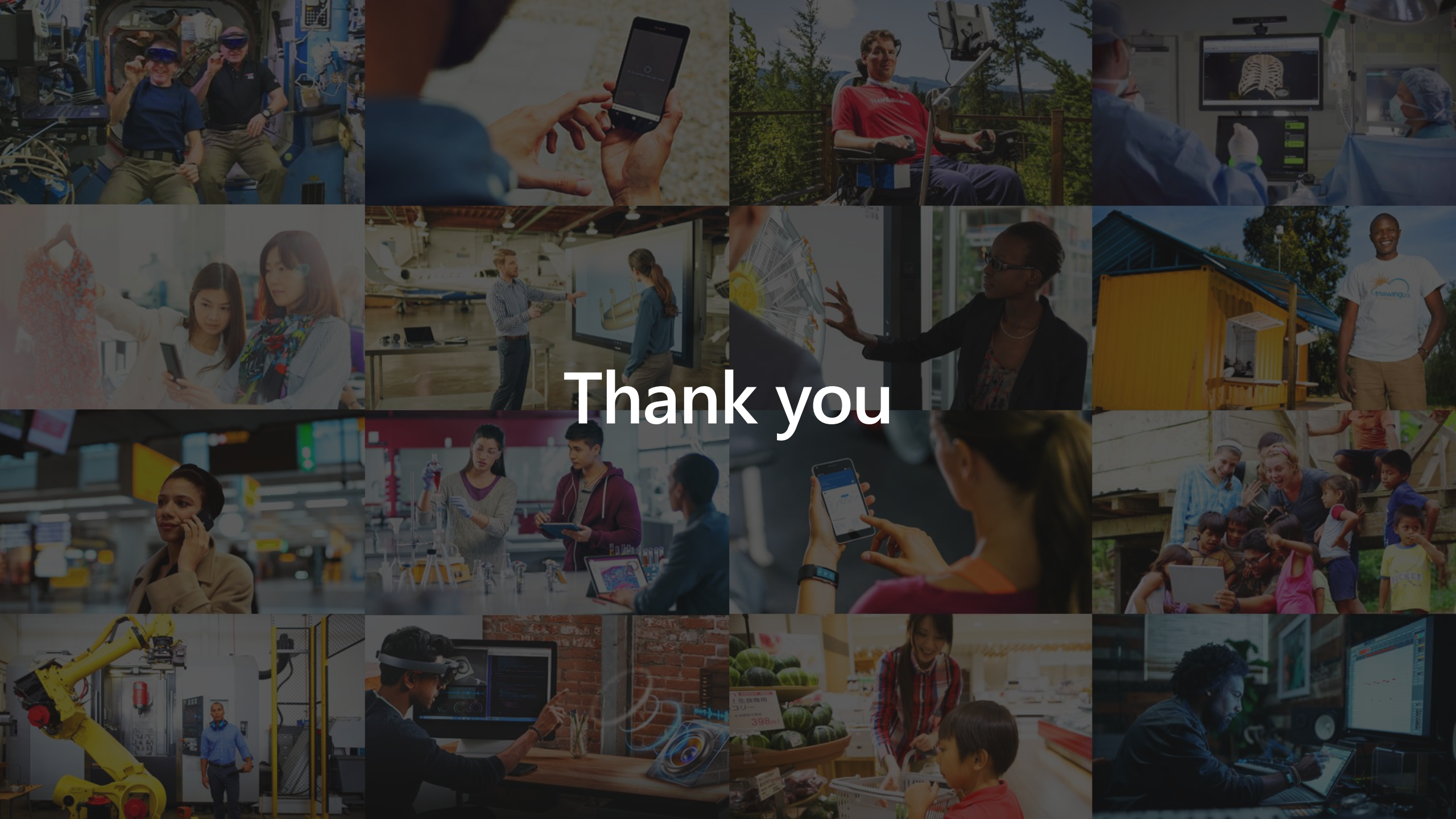


**Technology**



# Our society & technology





Thank you





**50B**

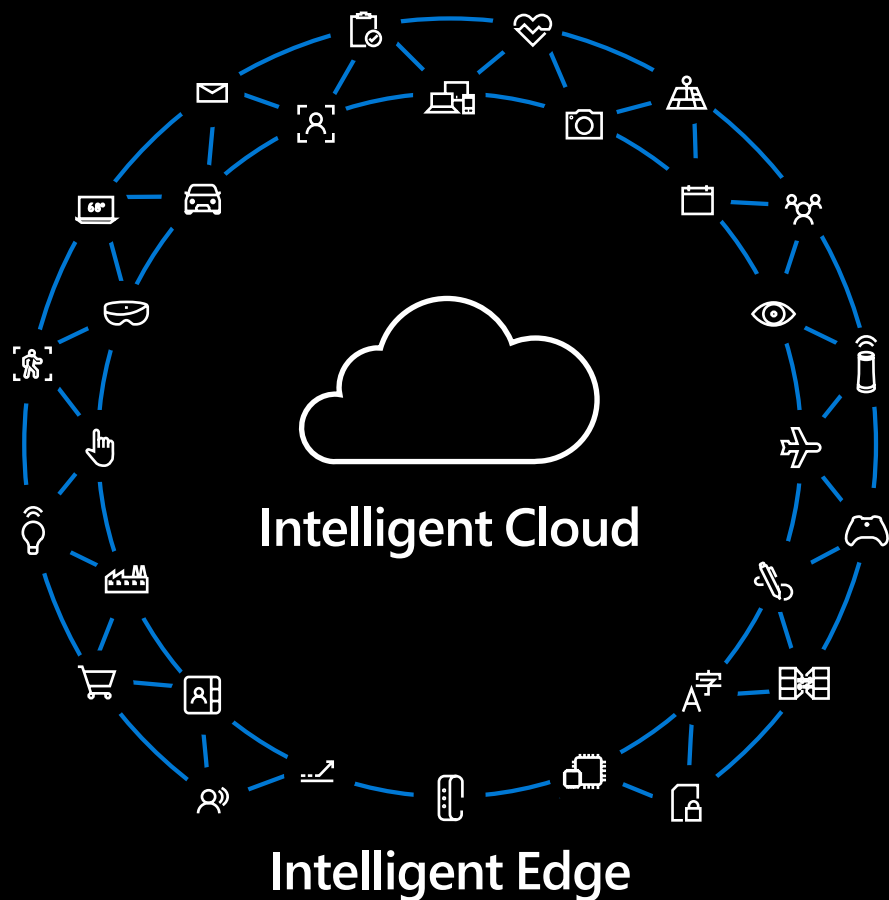
connected devices  
by 2030

**175ZB**

total amount of data  
by 2025

**500M+**

business apps by 2023



“Building applications for multi-device, multi-sense experiences is going to require a **very different form of computing architecture**.

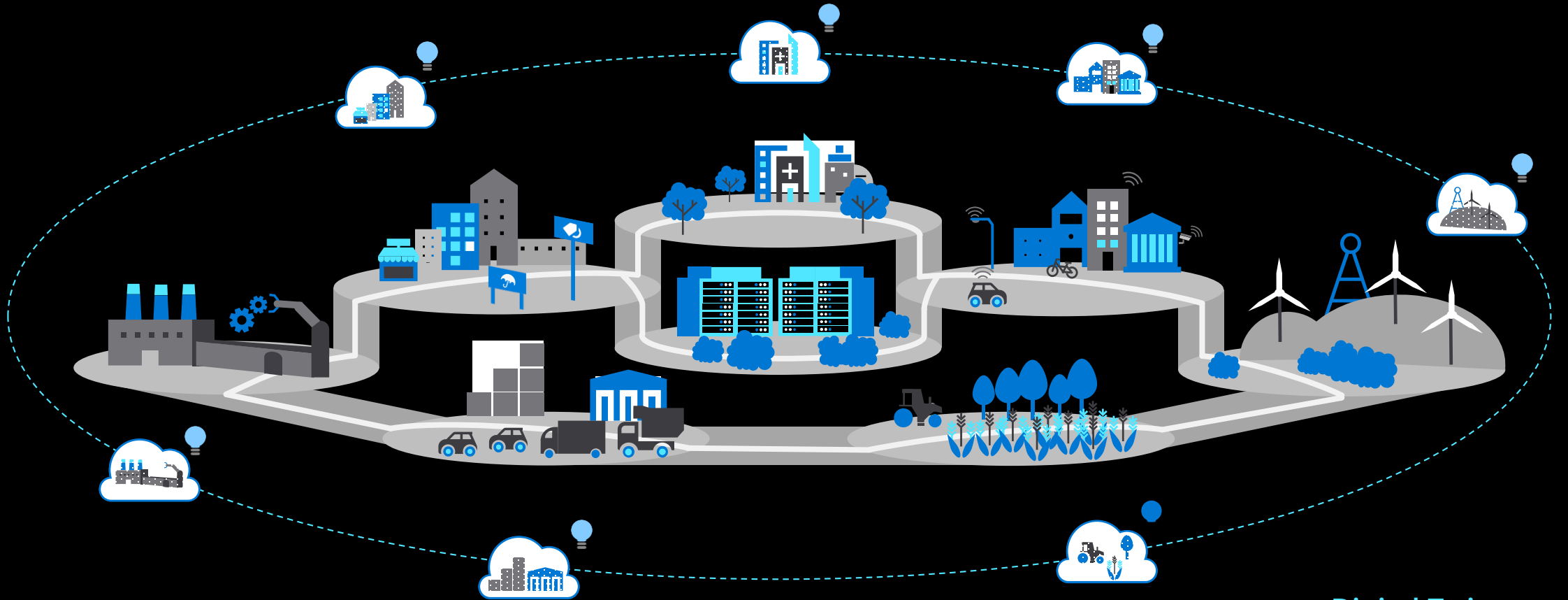
That's the motivation for bringing together all of our systems and people.

**Silicon in the edge to the silicon in the cloud architected as one workload that is distributed—**that's the challenge in front of us.”

—Satya Nadella, Q&A Session, April 2018



# Innovations enabling new opportunities



## Cloud

Globally available, unlimited compute resources

## IoT

Harnessing signals from sensors and devices, managed centrally by the cloud

## Edge

Intelligence offloaded from the cloud to IoT devices

## AI

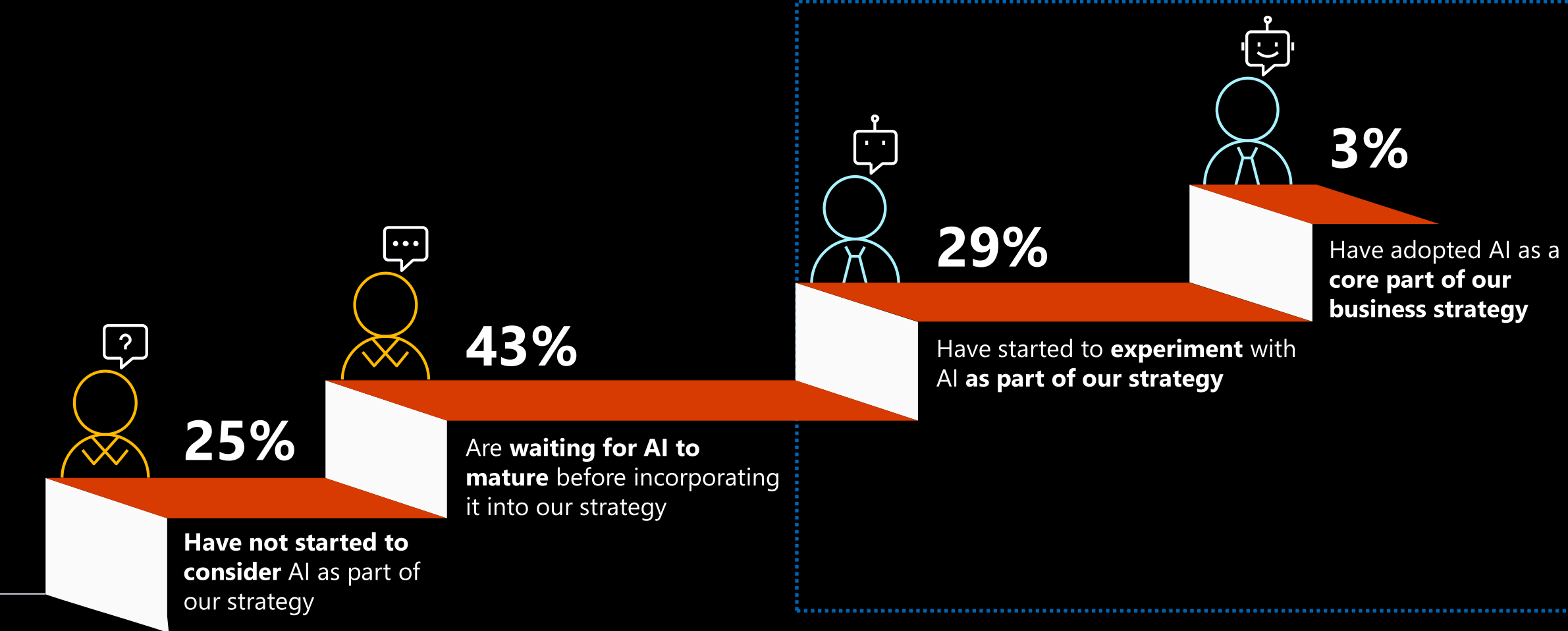
Breakthrough intelligence capabilities, in the cloud and on the edge

## Digital Twins

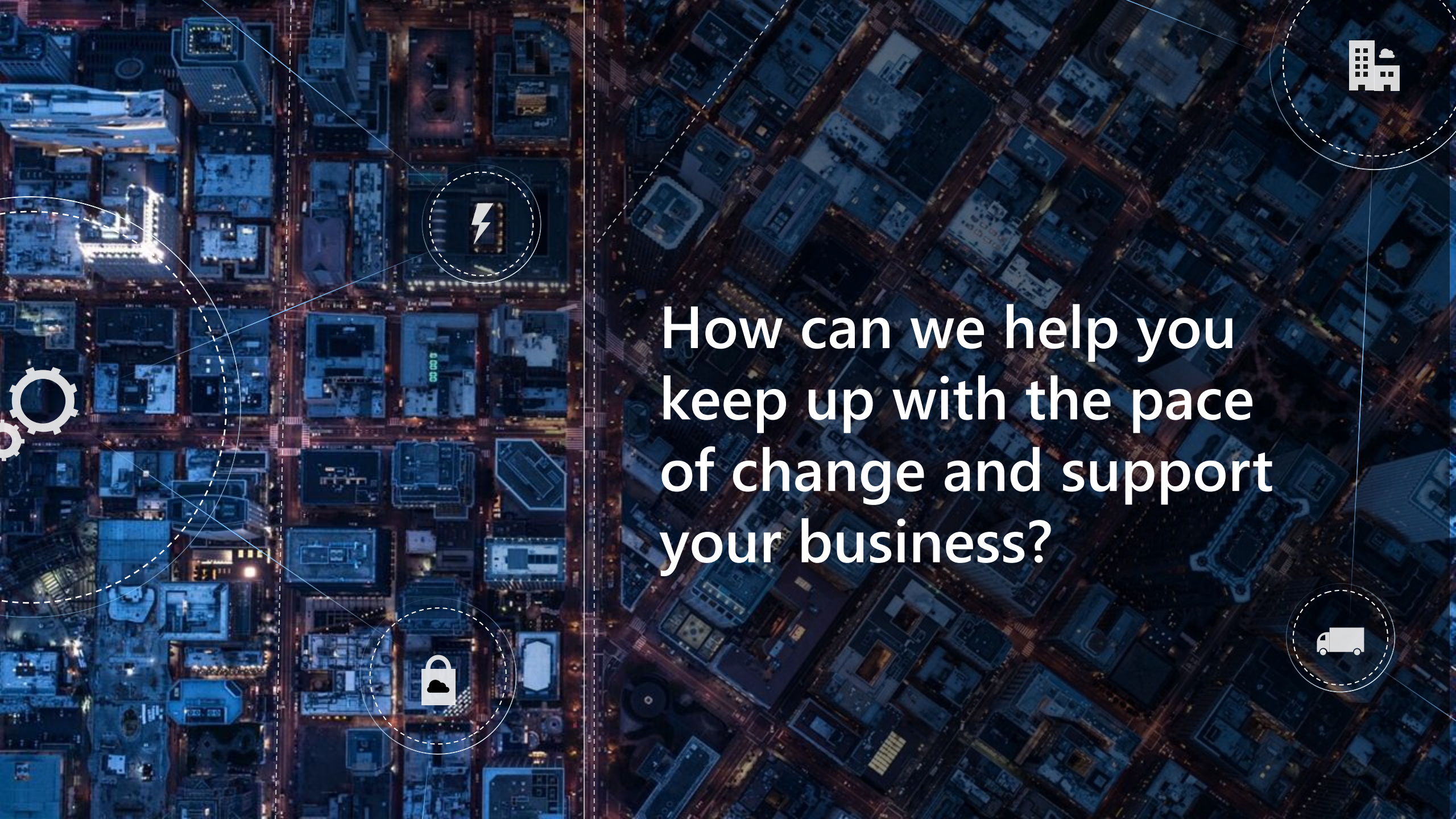
Create living replicas of any physical environment, track the past and predict the future



# Close to a third of organizations in Taiwan have started on their AI journeys







How can we help you  
keep up with the pace  
of change and support  
your business?



# Three emerging patterns of digital transformation



Customers are on a journey with **different digital maturity levels**



Build digital capabilities

Build digital businesses

## Modernization

Foundation for Digital Transformation

**Common initiatives:**

- Digital workplaces
- Digital customer experiences
- Transforming the infrastructure
- Application modernization

## Industry & Horizontal

Solution-centric opportunities

**Industry Solution** examples:

- Predictive Maintenance, Customer Insights, Citizen Services

**Horizontal Solution** examples:

- Digital Marketing, Employee Self-Service, Smart Buildings, Security & Surveillance

## Transformational

Reimagine their businesses

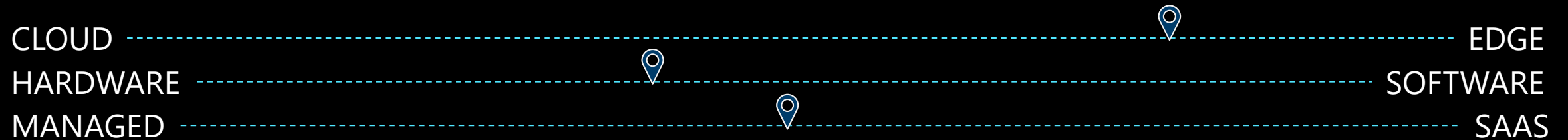
CXO sponsorship

**Digital Maturity Model** assessment




Comprehensive **program of change**

Evolves into new **commercial business models**

# Wherever you are on the IoT journey:



Microsoft has developed a set of secure, scalable offerings to help companies take advantage of IoT's powerful capabilities.

-  Grow securely and at scale with a trusted IoT leader
-  Get started quickly by leveraging a fully managed solution or build with templates for common IoT scenarios
-  Predictable costs to fit different needs and levels



# Microsoft's comprehensive IoT product portfolio

## Accelerating solution build and operate



Azure Security Center for IoT

Azure IoT priority verticals



Manufacturing



Retail



Agriculture



Energy



Smart Cities



Healthcare



Transportation

Azure IoT solutions



Azure IoT Central (SaaS)



Azure IoT reference architecture and accelerators (PaaS)



Dynamics Connected Field Service (SaaS)

Azure Services for IoT



Azure IoT Hub  
Azure IoT Hub Device Provisioning Service  
Azure Active Directory  
Azure AI  
Azure Cognitive Services

Azure Cosmos DB  
Azure Data Share  
Azure DevOps  
Azure Digital Twins  
Azure Logic Apps  
Azure Maps

Azure ML  
Azure Monitor  
Azure Spatial Anchors  
Azure Stream Analytics  
Azure Time Series Insights  
Power BI

IoT and Edge device support

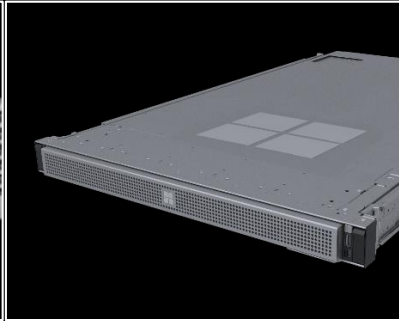
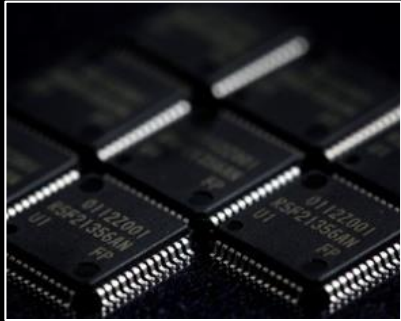


Azure IoT Device SDK  
Azure IoT Edge  
Azure Sphere  
Windows IoT

Azure Certified for IoT device catalog  
Azure Cognitive Services  
Azure Functions  
Azure ML

Azure SQL  
Azure Storage  
Azure Stream Analytics  
Data Box Edge

# The most comprehensive IoT and Edge offerings in the market



## Devices + Sensors

## Sensors to interactive

## Integrated platform

## Global scale processing

### IoT devices

#### Azure IoT Device SDK

Endpoint devices such as appliances, vehicles, or factory machines that connect, interact, and exchange data

1,300+ devices, 300+ partners—all certified to work great with Azure IoT Services

Cross-platform and open source: Windows IoT, Linux, RTOSs, ThreadX and more

### Device security

#### Azure Sphere

Integrated hardware, software, and cloud services work seamlessly together to deliver security by default

Deployment options to securely connect existing equipment and build security into new edge devices

Over 10 Years of security and OS updates delivered directly to each device by Microsoft

### Edge devices

#### Azure IoT Edge

Devices that aggregate, process, and provide gateway capabilities for IoT endpoints

Deploy and manage Azure Services in containers on any IoT device

AI, Azure ML, Azure Stream Analytics, and more

Cross-platform and open source: Windows IoT, Linux

### Edge appliances

#### Azure Data Box Edge

Integrated appliances that provide a subset of cloud edge roles, such as ML-inferencing

Data Box Edge: AI-enabled, storage, and compute Azure Edge appliance

Data Box: Offline, ruggedized data transport, 100 TB–1 PB

### On-premises platform

#### Azure Stack

Scalable solutions that provide a full cloud stack, including IaaS and PaaS capabilities

Edge and disconnected scenarios

Regulatory requirements

Cloud app model on-premises

### Hyperscale cloud

#### Edge Regions

First-party cloud regions

Full range hyperscale cloud services

Tiered service availability: Heroes > Hubs > Satellites

Open source-based services and tools

Most specialization

Fewest services

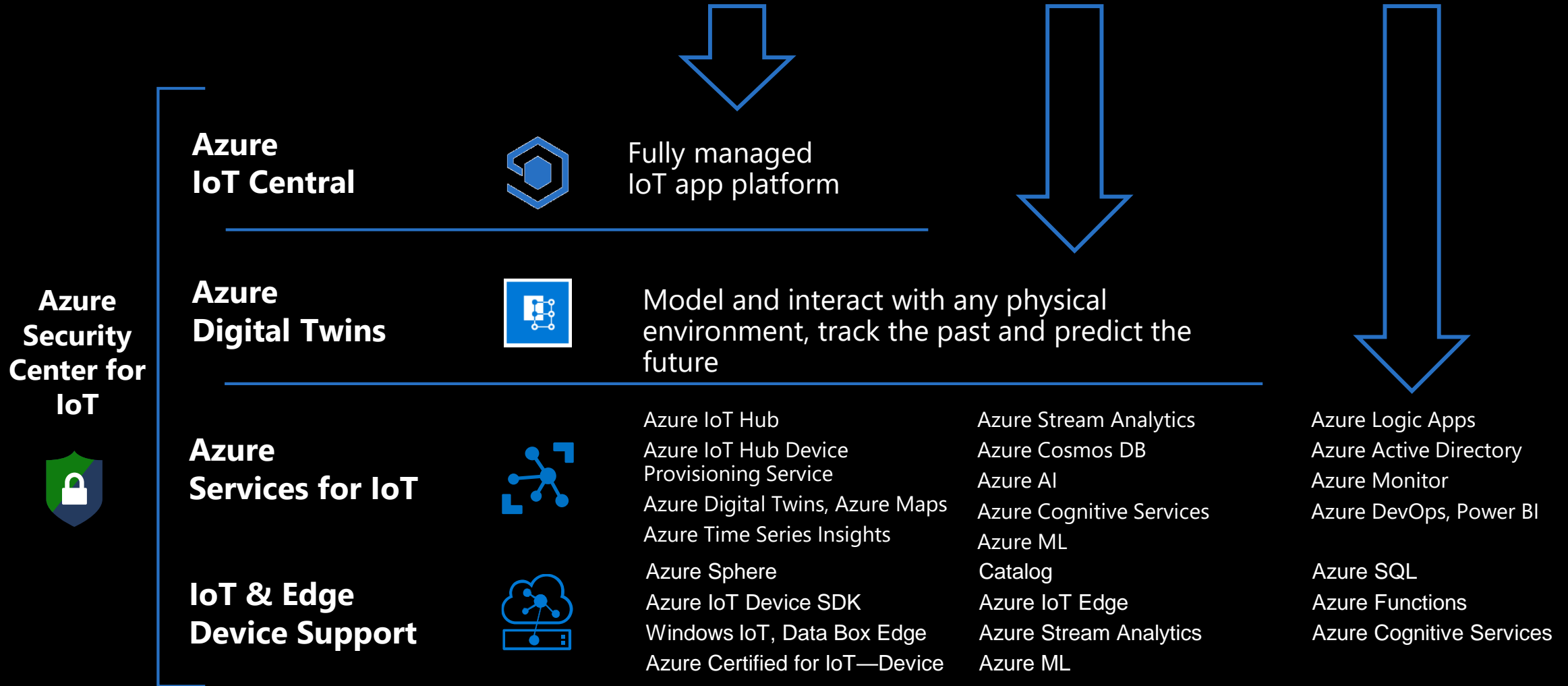
Full spectrum of Cloud + Edge form factors

Intentional and appropriate Azure service availability

Fewest form factors

Most services

# Three well-composed entry points for IoT solutions



# IoT partner value chain

IoT presents a unique opportunity to bring together multi-disciplinary partners



## End points

Silicon/Chip  
Manufacturers

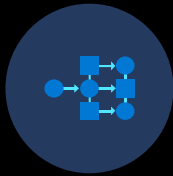
Gateway  
Manufacturers

M2M Modules

Device  
Manufacturers

Traditional OEMs

Device SIs



## Security

Software

Hardware

Regulatory  
experts

Privacy



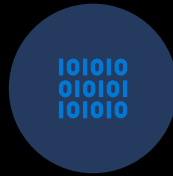
## Connectivity

Mobile Network  
Operators

Mobile Virtual  
Network  
Operators

Channel  
Development  
Providers

Application  
Enablement  
Platform ISVs



## Services

Solution  
Architecture

Solution  
Integrators

Service Providers

Presentation

Dashboarding

Big Data



## Business consultants

Consultants

Advisors

Professional  
Services

Industry  
Influencers



## Distributors

Aggregators

Scale through  
VARs



## Developers

ISV

In-house



## Regulators

Standards  
organizations

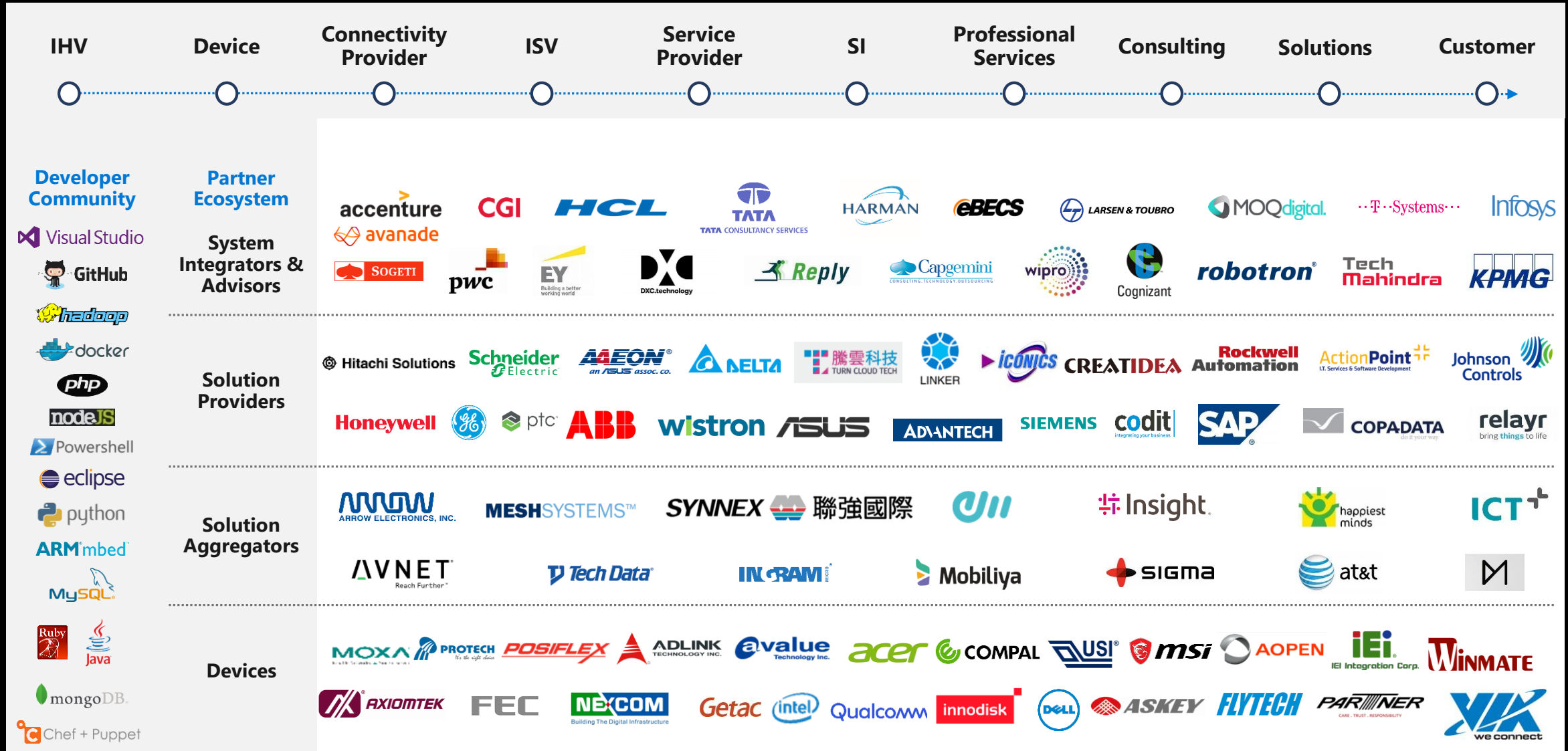
Industry Bodies

Accreditation  
organizations

Auditors

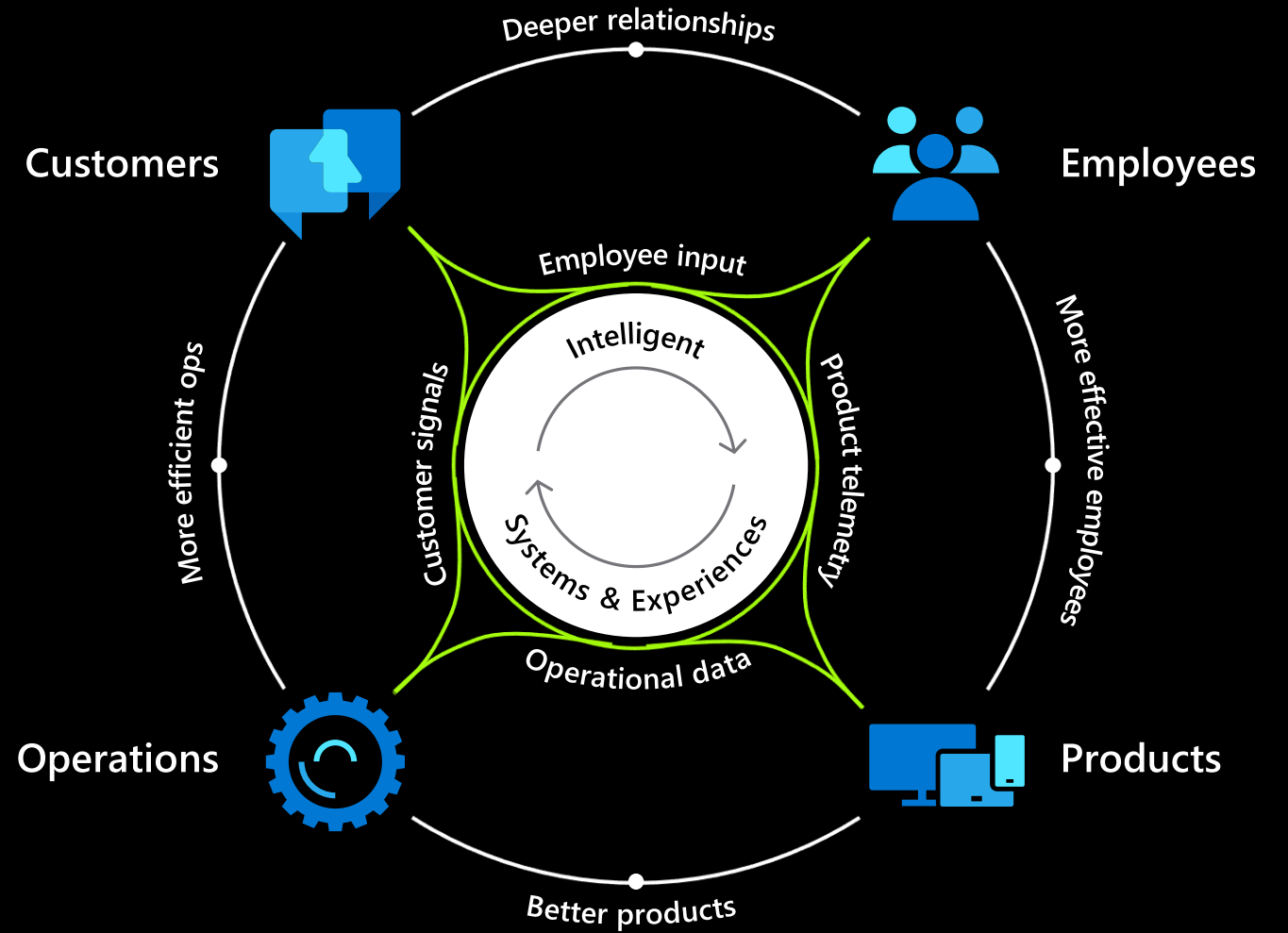


# IoT ecosystem momentum





# Making IoT smarter



# IoT vertical focus



## Manufacturing

Field Service  
Safety & Security  
Process & Quality  
Factory Automation



## Retail

Space & Assortment  
Inventory Mgmt.  
Personalization



## Healthcare

Patient Monitoring  
Research  
Supply Chain  
Operation Efficiency



## Energy

Oil & Gas  
Utilities  
Power Plants  
Environment Sensors



## Smart City/ Buildings

Security & Surveillance  
Monitoring & Safety  
Energy Mgmt.

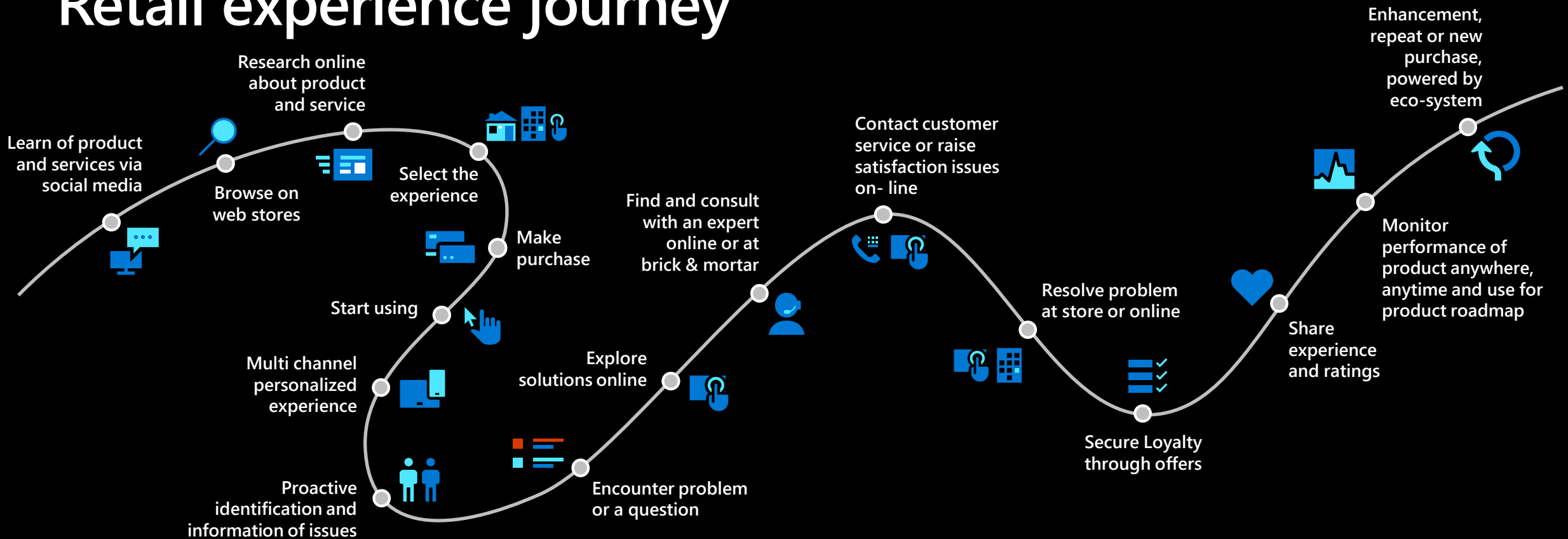


## Agriculture

Soil Sensors  
Livestock  
Equipment  
Supply Chain  
Connectivity



# Retail experience journey



Pre-purchase

Purchase

Post-purchase

Digital Transformation

Personalized Offers & Updates

Enhance Customer Experience

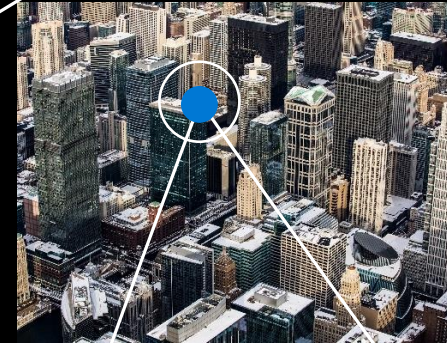
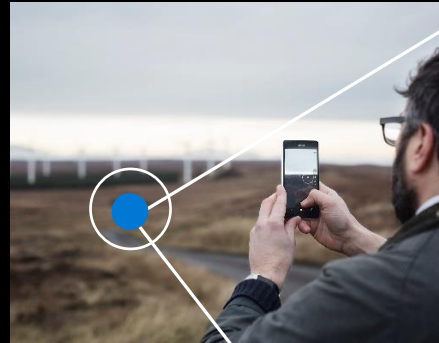
Create Brand Loyalty Learn & Act



# Customer momentum

|   |   |   |   |   |   |   |   |   |   |   |   |   |
|---|---|---|---|---|---|---|---|---|---|---|---|---|
|    |    |    |    |   |    |    |    |    |    |    |    |    |
|    |    |    |    |   |    |    |    |    |    |    |    |    |
|    |    |    |    |    |    |    |    |    |    |    |    |    |
|    |    |    |    |    |    |    |    |    |    |    |    |    |
|    |    |    |    |    |    |    |    |    |    |    |    |    |
|   |   |   |   |   |   |   |   |   |   |   |   |   |
|  |  |  |  |  |  |  |  |  |  |  |  |  |
|  |  |  |  |  |  |  |  |  |  |  |  |  |

So what's stopping  
**you** from making  
*things* happen?





*Cally Ko*  
*CIO, Delta Electronics*



# IoT in Action

#IoTinActionMS