



IoT Continuum: Evolving Business

Shirley Strachan

GM

IoT Device Experience Team

Microsoft Asia



IoT in Action, 深圳, 2019年12月3日 —Event Agenda

高管主题演讲	Executive Keynote	9:30–10:15am
实施业务转型	Business Transformation In Action	10:15–11:00am
构建智能边缘, 创建可扩展、可重复的解决方案	Architecting the Intelligent Edge to Create Scalable Repeatable Solutions	11:00–11:45am
交流午宴, 下午	Lunch Networking Break	11:45–12:45pm
通过 Microsoft 的 IoT 智能边缘挖掘 IoT 的潜力	Unlocking IoT's Potential	12:45–1:45pm
开发物联网安全实践 持久创新	Developing an IoT Security Practice for Durable Innovation	1:45–2:15pm
合作夥伴案例研究: Haimo Technologies Group	Partner Case Study: Haimo Technologies Group	2:15–2:45pm
交流茶歇	Afternoon Networking Break	2:45–3:30pm
混合现实、人工智能、无人机和机器人	Evolving IoT with Mixed Reality, AI, Drone and Robotic Technology	3:30–4:00pm
合作夥伴案例研究: Envision	Partner Case Study: Envision	4:00–4:30pm
激活 Microsoft 资源和计划, 以加快上市速度和联合销售	Activating Microsoft Resources & Programs to Accelerate Time to Market and Co-sell	4:30–5:00pm
商洽谈& 合作伙伴展位参观务	Partner-Customer Networking & Sponsored Partner Solution Showcase	全天 All day

Our Goal



IoT Community



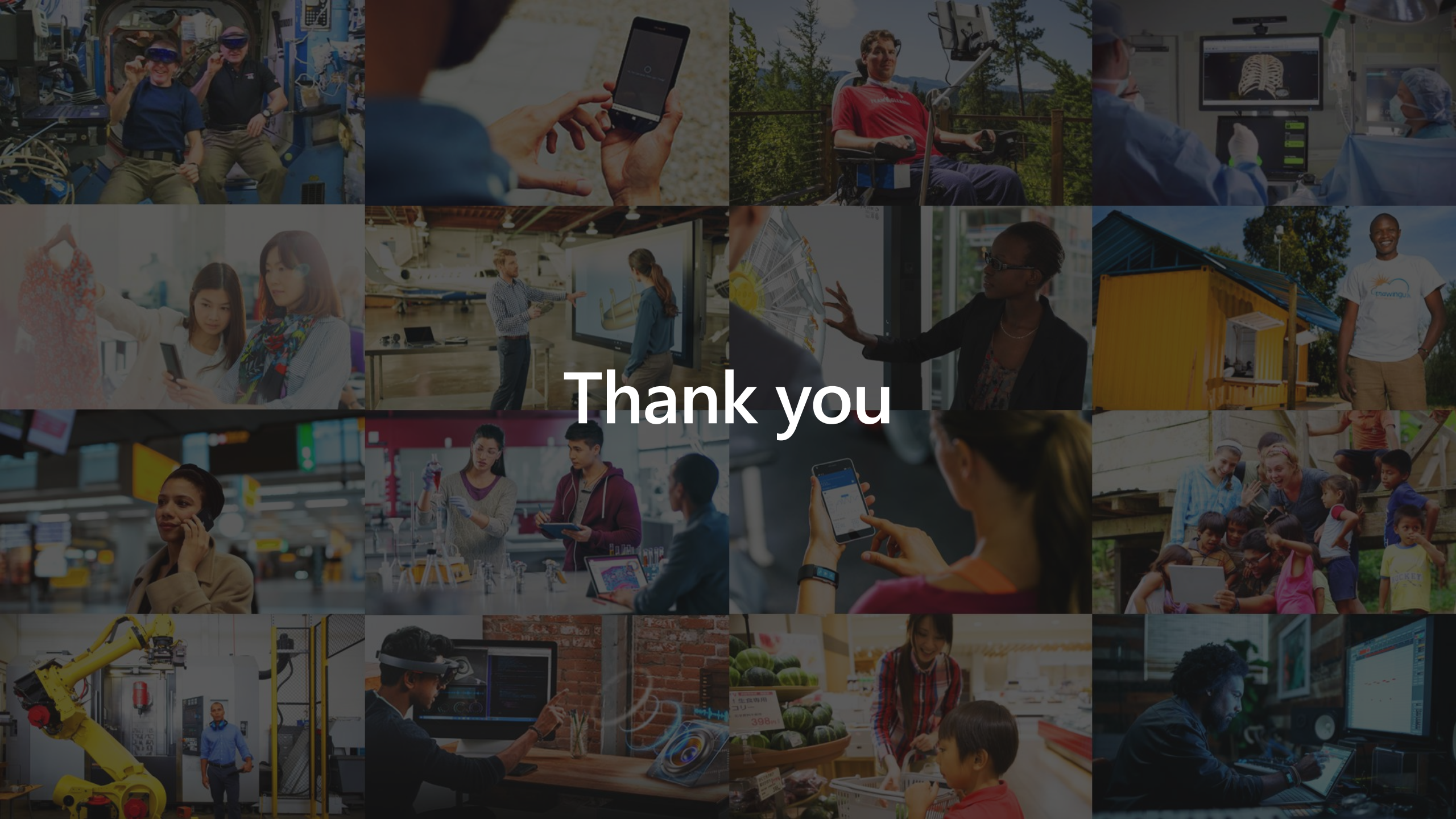
Partners



Technology



Our society & technology



Thank you



50B

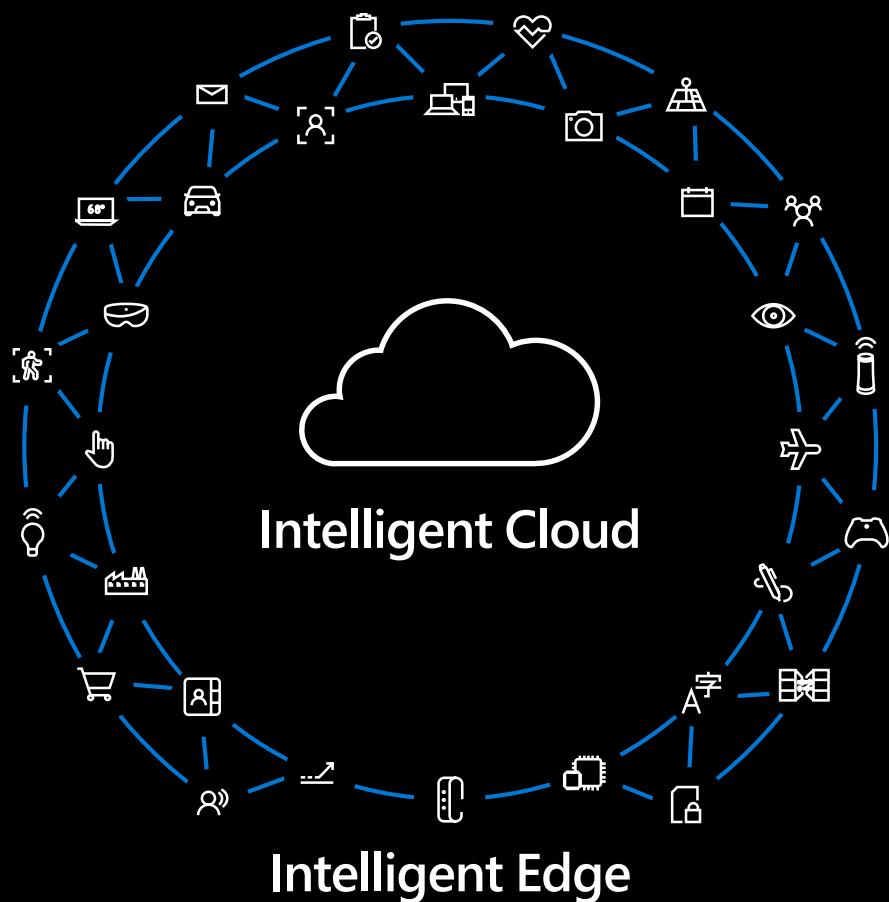
connected devices
by 2030

175ZB

total amount of data
by 2025

500M+

business apps by 2023



"Building applications for multi-device, multi-sense experiences is going to require a **very different form of computing architecture**.

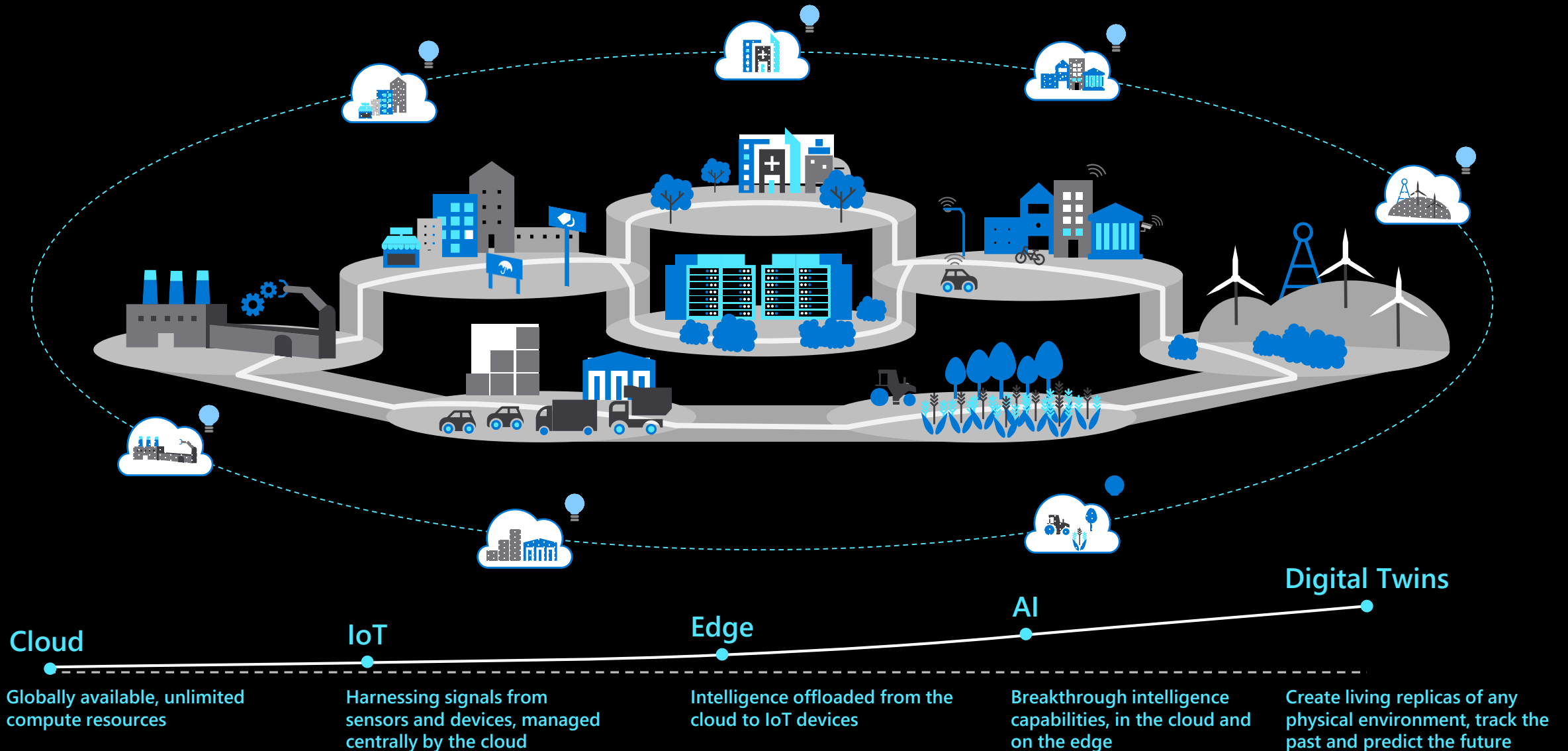
That's the motivation for bringing together all of our systems and people.

Silicon in the edge to the silicon in the cloud architected as one workload that is distributed—that's the challenge in front of us."

—Satya Nadella, Q&A Session, April 2018



Innovations enabling new opportunities



An aerial night view of a city grid, with buildings and streets illuminated. Overlaid on the image are several white icons: a lightning bolt in a dashed circle, a padlock in a dashed circle, a truck in a dashed circle, and a building in a dashed circle. There are also dashed lines connecting these icons and a gear icon on the left side.

How can we help you
keep up with the pace
of change and support
your business?

Three emerging patterns of digital transformation



Customers are on a journey with **different digital maturity levels**



Build digital
capabilities

Build digital
businesses

Modernization

Foundation for Digital Transformation

Common initiatives:

- Digital workplaces
- Digital customer experiences
- Transforming the infrastructure
- Application modernization

Industry & Horizontal

Solution-centric opportunities

Industry Solution examples:

- Predictive Maintenance, Customer Insights, Citizen Services

Horizontal Solution examples:

- Digital Marketing, Employee Self-Service, Smart Buildings, Security & Surveillance

Transformational

Reimagine their businesses

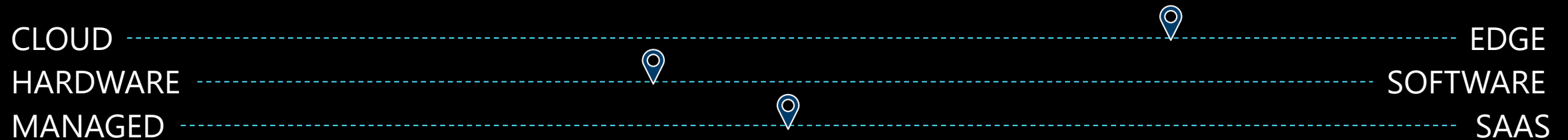
CXO sponsorship

Digital Maturity Model assessment




Comprehensive **program of change**

Evolves into new **commercial business models**

Wherever you are on the IoT journey:



Microsoft has developed a set of secure, scalable offerings to help companies take advantage of IoT's powerful capabilities.

-  Grow securely and at scale with a trusted IoT leader
-  Get started quickly by leveraging a fully managed solution or build with templates for common IoT scenarios
-  Predictable costs to fit different needs and levels

Microsoft's comprehensive IoT product portfolio

Accelerating solution build and operate



Azure Security
Center for IoT

Azure IoT
priority verticals



Manufacturing



Retail



Agriculture



Energy



Smart Cities



Healthcare



Transportation

Azure IoT solutions



Azure IoT Central
(SaaS)



Azure IoT reference
architecture and accelerators (PaaS)



Dynamics Connected
Field Service (SaaS)

Azure Services
for IoT



Azure IoT Hub
Azure IoT Hub Device
Provisioning Service
Azure Active Directory
Azure AI
Azure Cognitive Services

Azure Cosmos DB
Azure Data Share
Azure DevOps
Azure Digital Twins
Azure Logic Apps
Azure Maps

Azure ML
Azure Monitor
Azure Spatial Anchors
Azure Stream Analytics
Azure Time Series Insights
Power BI

IoT and Edge
device support

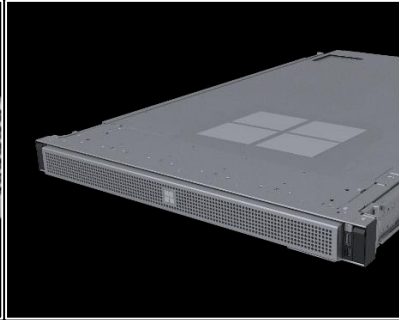
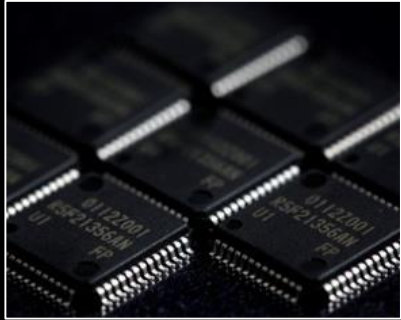


Azure IoT Device SDK
Azure IoT Edge
Azure Sphere
Windows IoT

Azure Certified for IoT device catalog
Azure Cognitive Services
Azure Functions
Azure ML

Azure SQL
Azure Storage
Azure Stream Analytics
Data Box Edge

The most comprehensive IoT and Edge offerings in the market



Devices + Sensors

IoT devices

Azure IoT Device SDK

Endpoint devices such as appliances, vehicles, or factory machines that connect, interact, and exchange data

1,300+ devices, 300+ partners—all certified to work great with Azure IoT Services

Cross-platform and open source: Windows IoT, Linux, RTOSs, ThreadX and more

Device security

Azure Sphere

Integrated hardware, software, and cloud services work seamlessly together to deliver security by default

Deployment options to securely connect existing equipment and build security into new edge devices

Over 10 Years of security and OS updates delivered directly to each device by Microsoft

Sensors to interactive

Edge devices

Azure IoT Edge

Devices that aggregate, process, and provide gateway capabilities for IoT endpoints

Deploy and manage Azure Services in containers on any IoT device

AI, Azure ML, Azure Stream Analytics, and more

Cross-platform and open source: Windows IoT, Linux

Integrated platform

Edge appliances

Azure Data Box Edge

Integrated appliances that provide a subset of cloud edge roles, such as ML-inferencing

Data Box Edge: AI-enabled, storage, and compute Azure Edge appliance

Data Box: Offline, ruggedized data transport, 100 TB–1 PB

On-premises platform

Azure Stack

Scalable solutions that provide a full cloud stack, including IaaS and PaaS capabilities

Edge and disconnected scenarios

Regulatory requirements

Cloud app model on-premises

Global scale processing

Hyperscale cloud

Edge Regions

First-party cloud regions

Full range hyperscale cloud services

Tiered service availability: Heroes > Hubs > Satellites

Open source-based services and tools

Most specialization

Fewest services

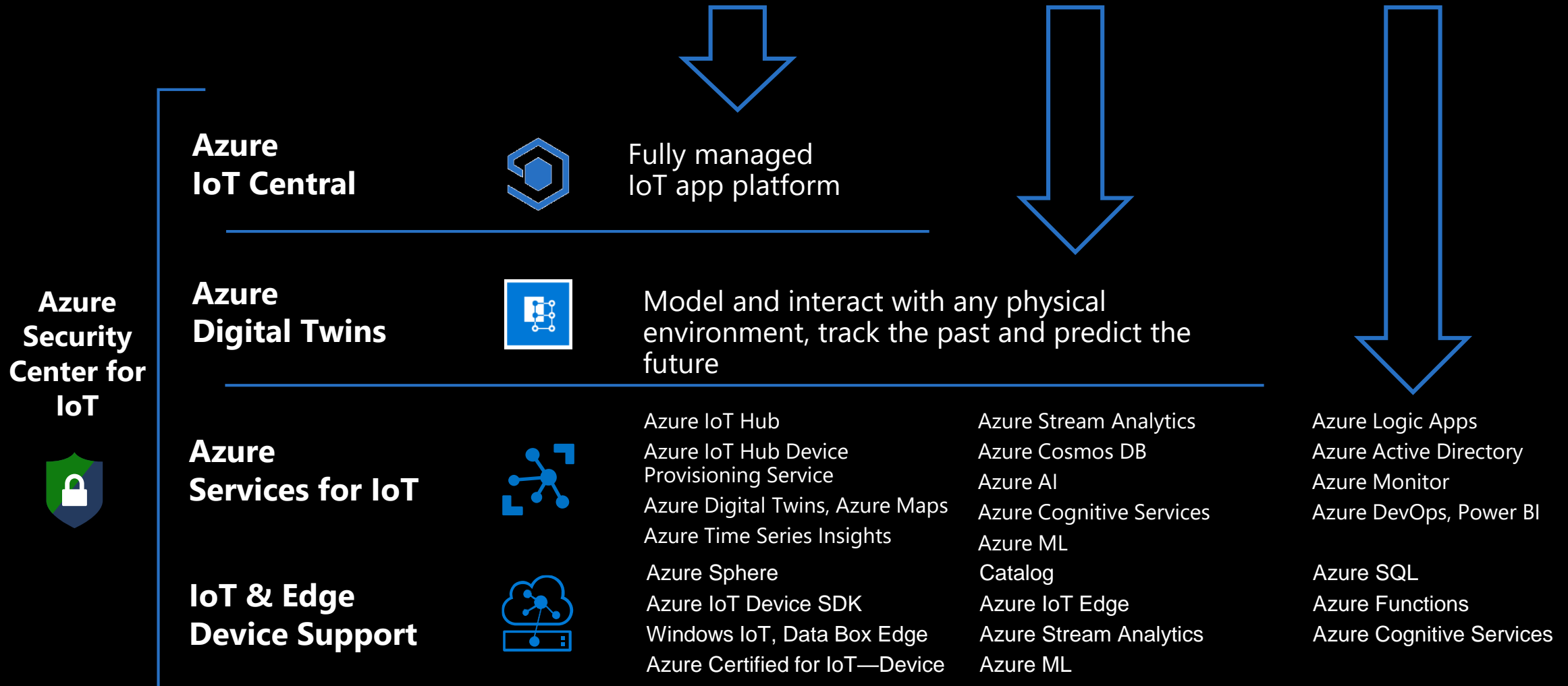
Full spectrum of Cloud + Edge form factors

Intentional and appropriate Azure service availability

Fewest form factors

Most services

Three well-composed entry points for IoT solutions



IoT partner value chain

IoT presents a unique opportunity to bring together multi-disciplinary partners



End points

Silicon/Chip
Manufacturers

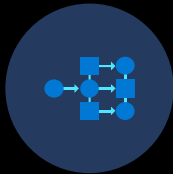
Gateway
Manufacturers

M2M Modules

Device
Manufacturers

Traditional OEMs

Device SIs



Security

Software

Hardware

Regulatory
experts

Privacy



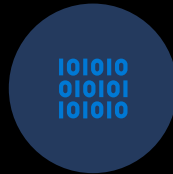
Connectivity

Mobile Network
Operators

Mobile Virtual
Network
Operators

Channel
Development
Providers

Application
Enablement
Platform ISVs



Services

Solution
Architecture

Solution
Integrators

Service Providers

Presentation

Dashboarding

Big Data



Business consultants

Consultants

Advisors

Professional
Services

Industry
Influencers



Distributors

Aggregators

Scale through
VARs



Developers

ISV

In-house



Regulators

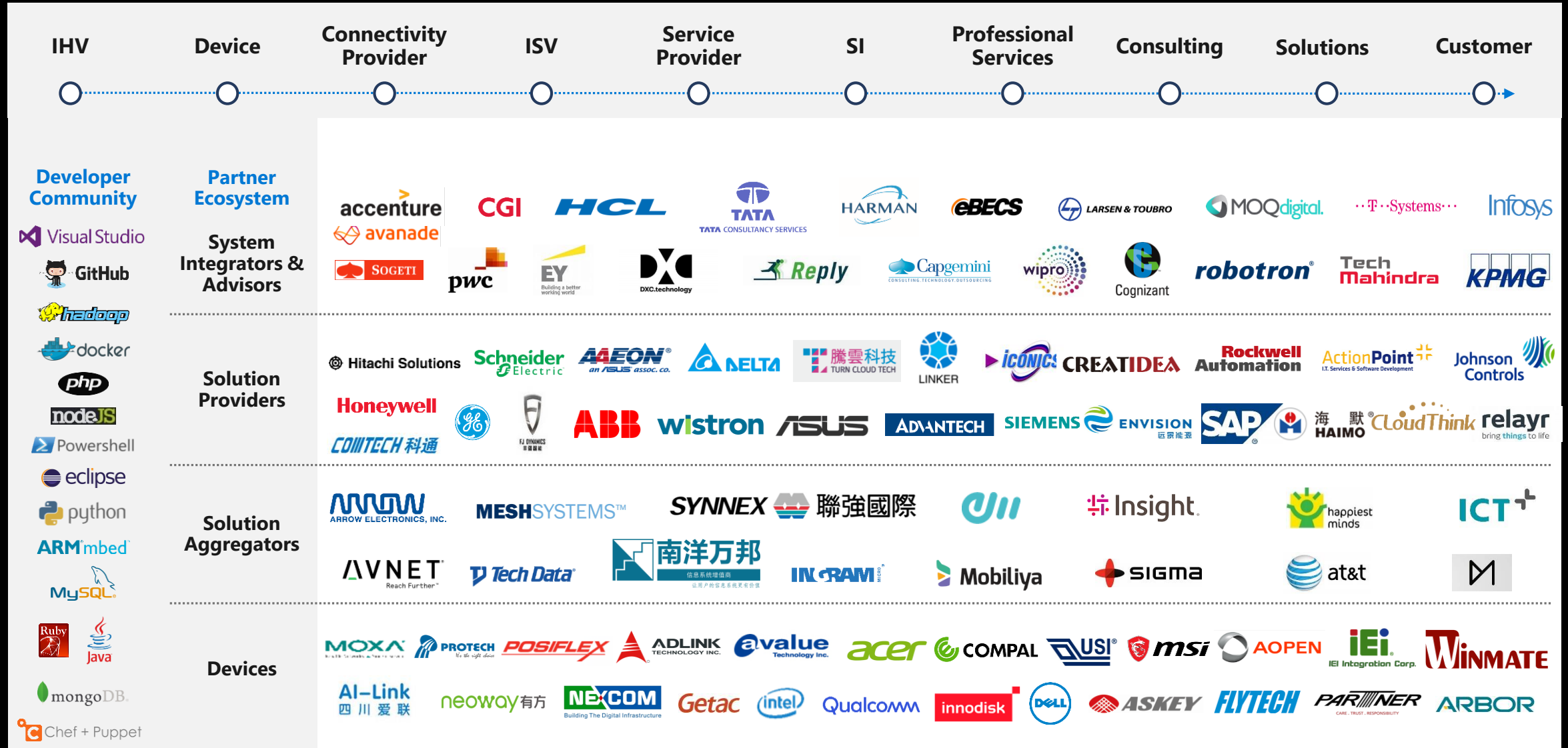
Standards
organizations

Industry Bodies

Accreditation
organizations

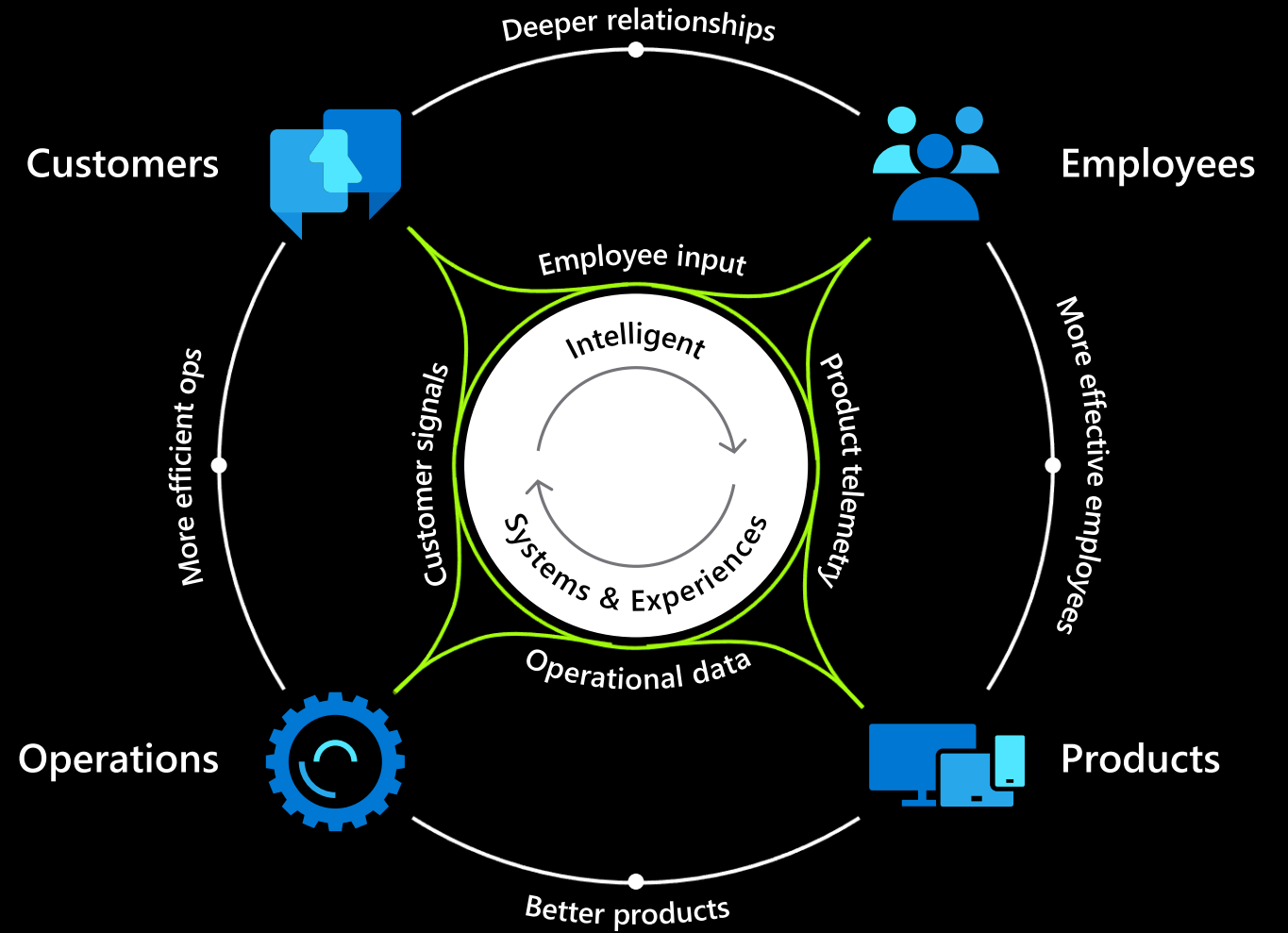
Auditors

IoT ecosystem momentum





Making IoT smarter



IoT vertical focus



Manufacturing

Field Service
Safety & Security
Process & Quality
Factory Automation



Retail

Space & Assortment
Inventory Mgmt.
Personalization



Healthcare

Patient Monitoring
Research
Supply Chain
Operation Efficiency



Energy

Oil & Gas
Utilities
Power Plants
Environment Sensors



Smart City/ Buildings

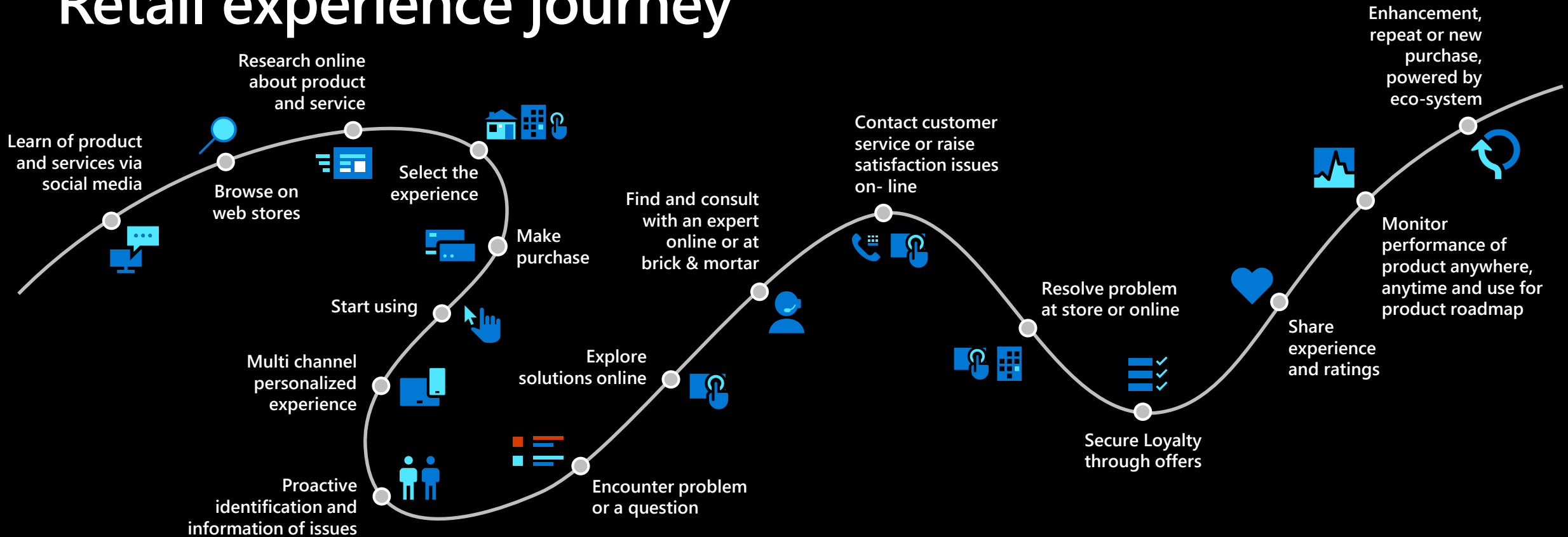
Security &
Surveillance
Monitoring & Safety
Energy Mgmt.



Agriculture

Soil Sensors
Livestock
Equipment
Supply Chain
Connectivity

Retail experience journey

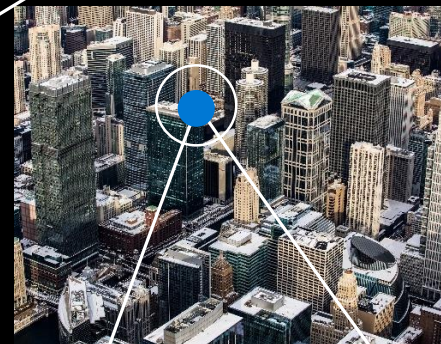
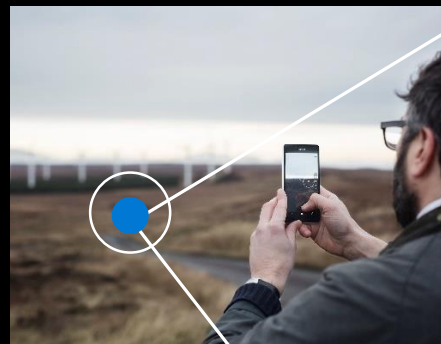


Digital Transformation	Pre-purchase Personalized Offers & Updates	Purchase Enhance Customer Experience	Post-purchase Create Brand Loyalty Learn & Act
------------------------	-----------------------------------------------	-----------------------------------------	------------------------------------------------------

Customer momentum



So what's stopping
you from making
things happen?





新生态，新机遇 微软助力 中国物联网发展

Horace Chow

微软中国首席运营官





这是一个运行在软件+物联网上的世界
The world runs on software + IoT

IoT as become building blocks for future business

物联网已成为构建未来商业的基石



混合现实
Mixed reality



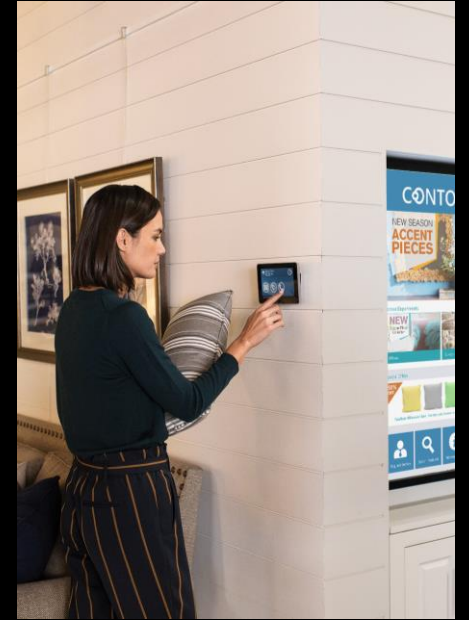
量子计算
Quantum
computing



人工智能
Artificial
intelligence



区块链
Blockchain



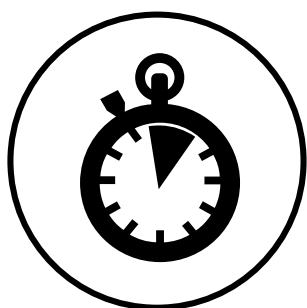
边缘计算
Edge Computing

但是，IoT的成功研发及落地其实并没有那么容易



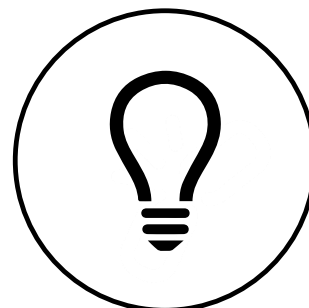
Difficult to maintain
cohesive **security**

整体系统安全性
的困难



Time-consuming
to get started

项目起步时间太长



Incompatible with
existing infrastructure

与现有基础设施的
集成度

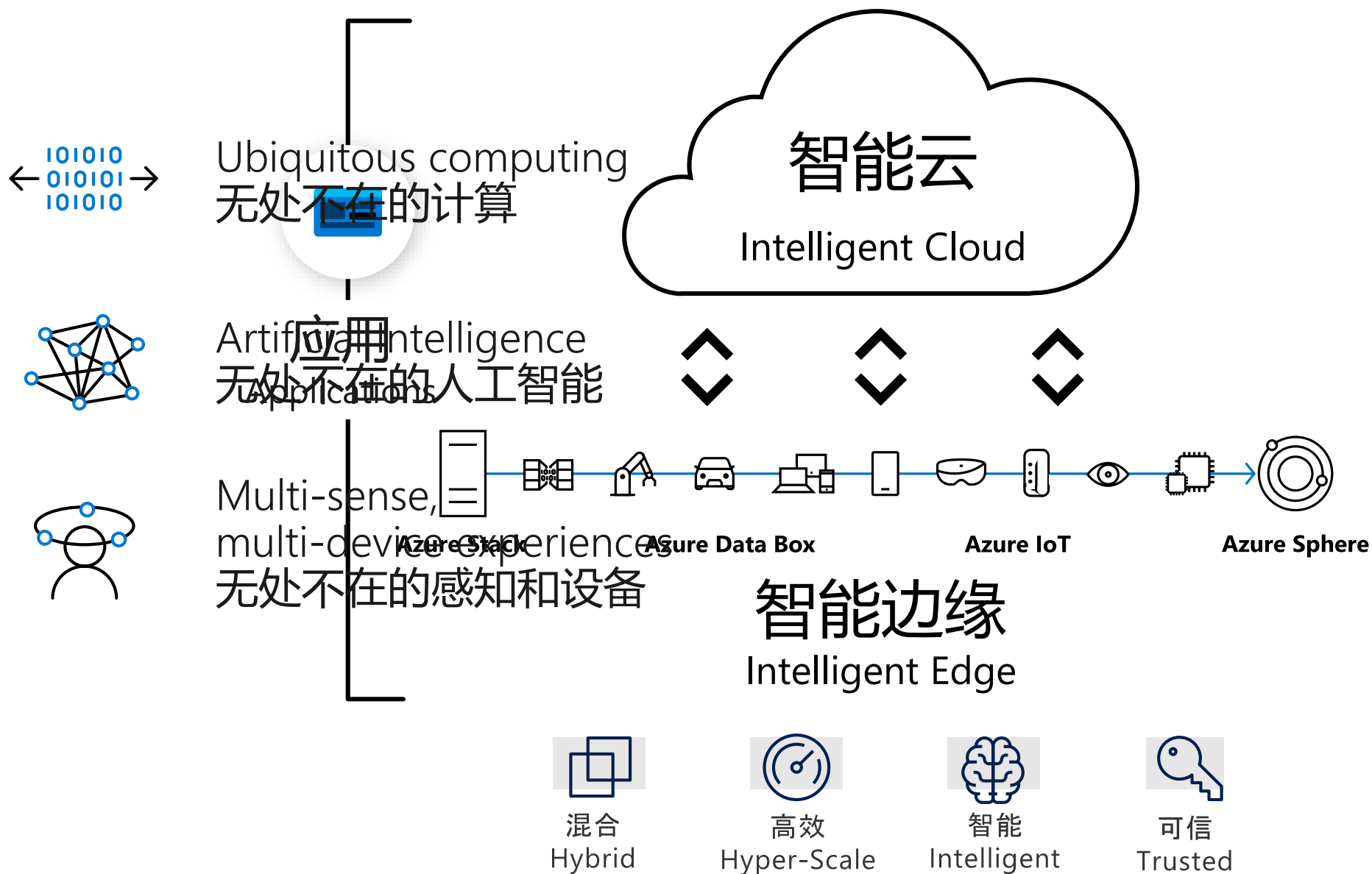


Challenging to
scale over time

规模化部署
比较挑战

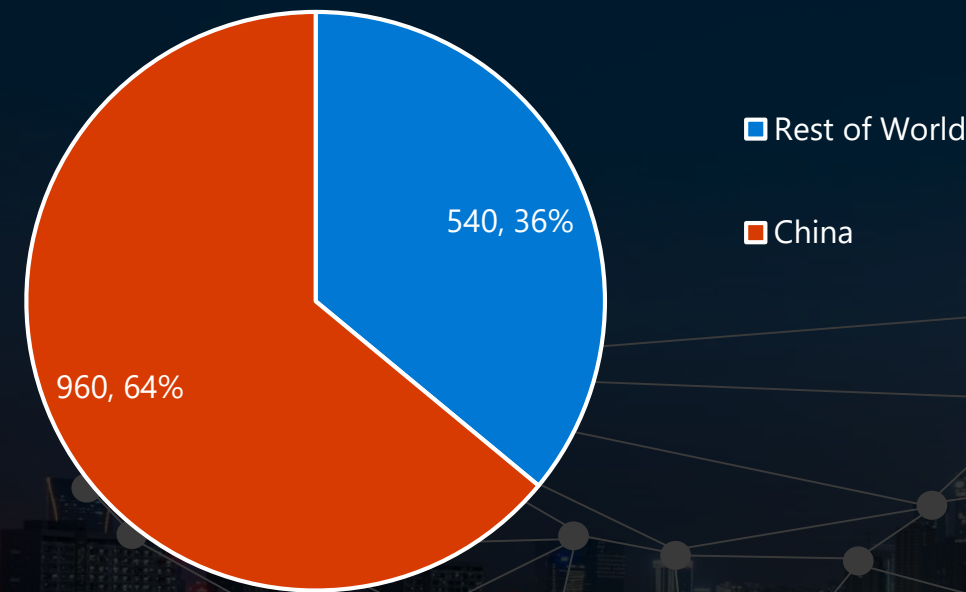
Difficult to **integrate with business processes** | 难以和企业流程紧密集成

微软助力简化IoT研发及落地



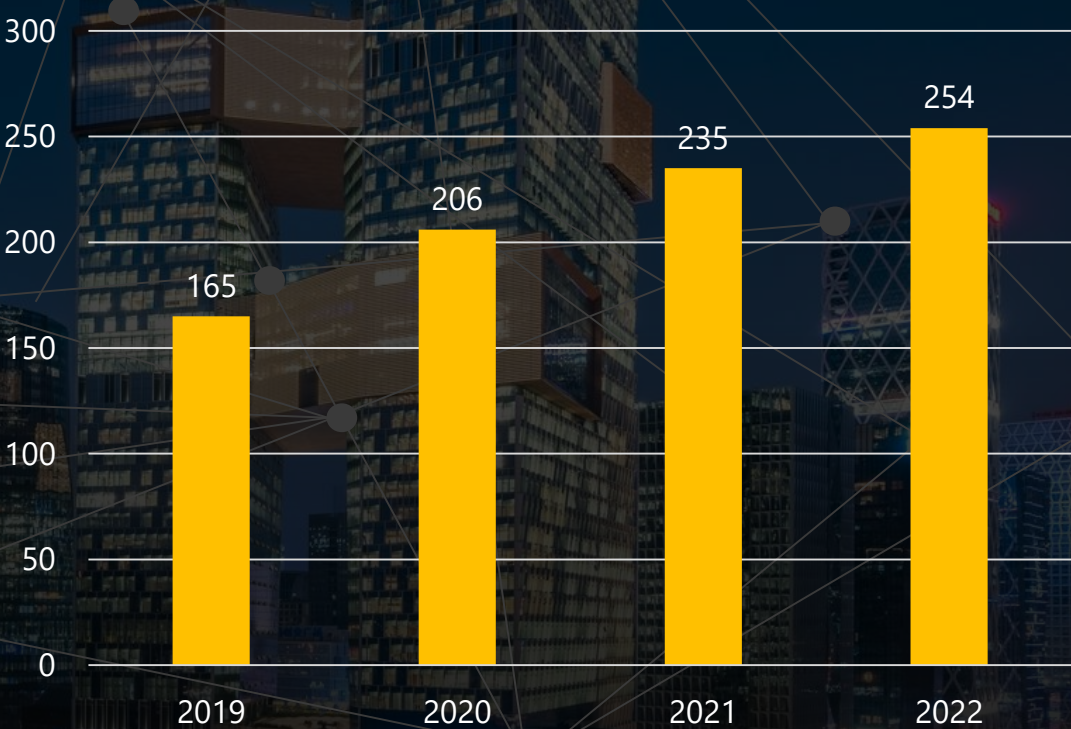
中国已引领全球物联网市场发展

全球移动物联网设备数量（百万）



Source: 1. Business Sweden, China; 2. GSMA, 2019 July

2017-2022中国物联网市场支出预期 (美金，亿)



2019年微软持续加大对中国物联网的投入：



三云落地

Azure + Office 365
+ Dynamics 365

均在中国境内落地
运营



实验室落地

微软人工智能及
物联网实验室
在5月份成功落地
上海



深化企业合作

与万科，上海仪
电，科勒，AO史
密斯等传统企业
开展深入IoT合作



构建行业生态

在零售，制造，
智慧空间行业打
造合作伙伴生态
系统

微软智能云：繁荣云生态

90%

Office
新增中国客户
选择Office 365云服务

12万+

中国企业用户选择 Azure

25%

SQL Server新增中国客户
首选云托管

17,000+

中国市场云合作伙伴

180万+

Office 365
中国付费用户

TOP 4 

中国前四大手机企业
采用Azure公有云

15万

中国开发者使用
微软智能云和AIoT

95%

全球
“财富500强”
企业采用
微软云服务

3 of 5

全球前五大智能手机
厂商中三大品牌
选择微软云

50%+

Dynamics全球
业务采用灵活的
混合云部署

2,500+

大中华区企业
采用微软人工智
能服务

10,000+

“Azure 知识产权保护计划 (AIPA)”
为全球和中国Azure用户
提供超过1万项微软专利 “保护伞”



Redmond, WA
USA



Munich, Germany

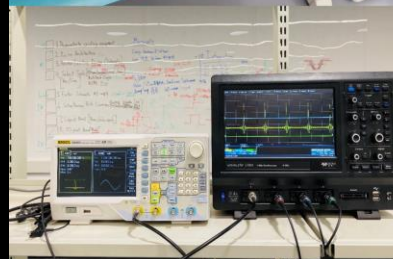
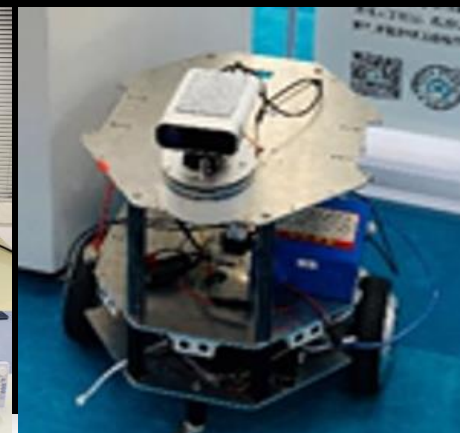


Shanghai, China



Shenzhen, China

微软人工智能与物联网实验室 于2019年5月成功落地中国



与实验室合作的客户/合作伙伴



感谢加入微软
物联网生态系统
Thank you!

Hisense

CHERY
WEAR FUN TO DRIVE

CLP 中電

AI-Link
四川爱联

INE'SA
INFORMATION
SOLUTIONS

dji

pactera

ASUS

HollySys

Ford

A.O. SMITH
史密斯

OOCL
We take it personally

FOCUS

Nibiru

GRC Banking
广电运通

春秋航空
SPRING AIRLINES

BMW

Lenovo

康师傅

vanke

accenture

ZPMC
上海振华重工

Mobiliya

Yanfeng

TONLY

ADLINK

USI

TATA

科勒
KOHLER

ABB

MEDIATEK

Hietech 海亿达
实时能效专家

icom

SAIC
上汽集团
SAIC MOTOR

Geniatech
金亚太

安吉物流

Honeywell

招金
ZHAO JIN

seeed
Open Hardware Facilitator

a-value

HUAZHI
华制智能

FJ DYNAMICS
丰盈储能

CLEIDON

ENVISION
远景能源

McDonald's

小米
MI.COM

Imind

Clobotics
广博智

Rockwell Automation

ANET

海默
HAIMO

Rolls-Royce

Smagreen

Lenovo

HIKVISION

美名软件
M&M
SOFTWARE

soda

甘来
GUMP COME

COMAU

ATOS

科百科技
Kobayashi Science & Technology
Beijing

roobo

Jimi
Care & Share

AOPEN
Bright View Connected

CIMC 中集

robustel

9-A-M

国光
GEIT

PHILIPS

DELL

EMERSON

KONKA

Starbucks

LAUNCH

天正科技
TIANZHENG TECHNOLOGY

duotel

Schlumberger

MOXA

Roche

SIRUN 斯润

Medalsoft

LEEDARSON
The Smartest Eyes, Seeing Further

Centerm

Coca-Cola

mindray 迈瑞

BroadLink

博彦科技
BEYONDSOFT

华意压缩
HUIYI

ADVANTECH

NEXCOM
The Intelligent Systems

SKYPINE

雀巢
Nestle

百联集团
BAILIAN GROUP

TGOOD 特来电

BYD

秒秒测
ZenMeasure

EVOC

研祥智能股份
EVOC INTELLIGENT TECHNOLOGY

MEON
an ASUS assoc. co.

Emdoor

PERSPICACE

科通芯城

alhua

innov
中科云创
cloudinnov.cn

START

SENSORO

CVTE 视源股份

中控·SUPCON

微软中国物联网+云客户案例：A.O.史密斯

借助微软物联网和Dynamics CRM, 打造适配业务需求及未来发展的解决方案，提高服务人员工作的移动性和智能性，全面地提升了售后服务的质量

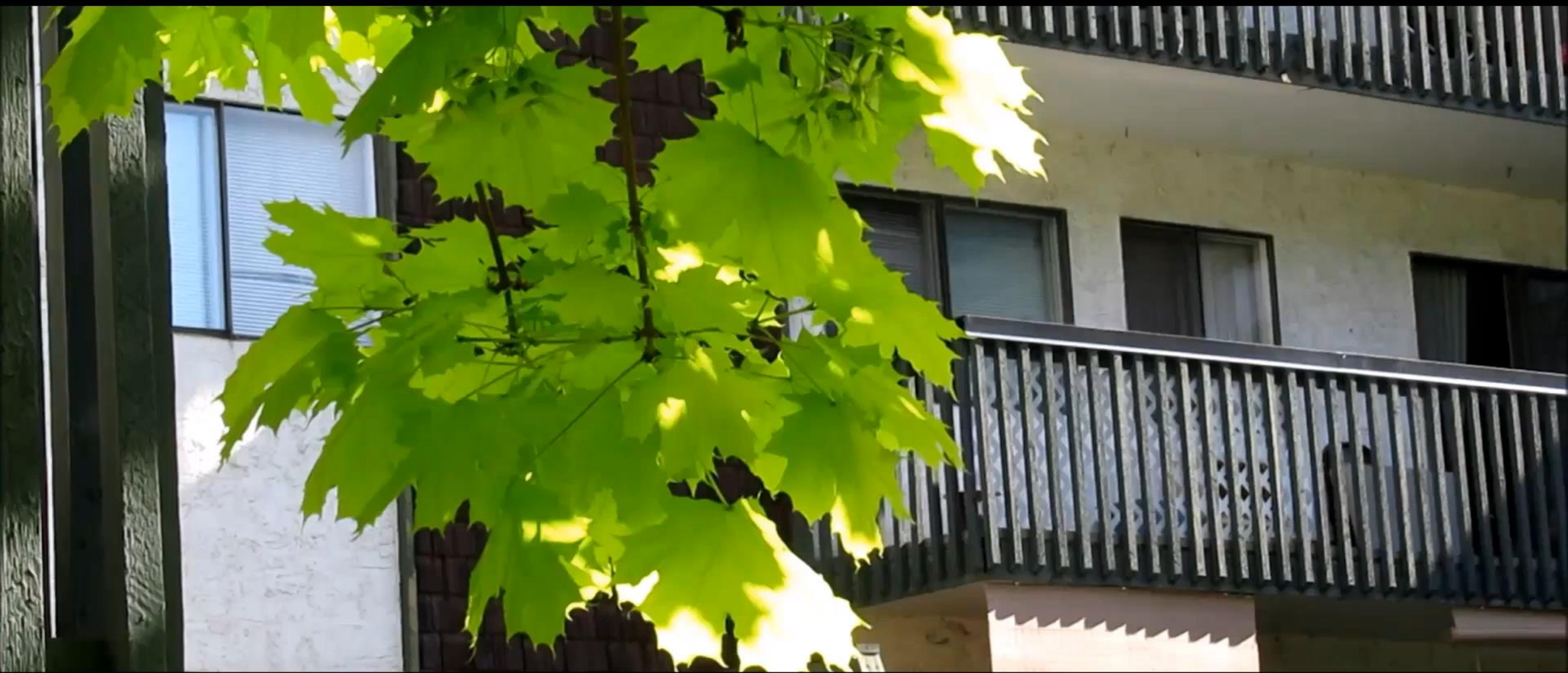


行业
家电零售消费品行业



微软解决方案
Azure IoT
Dynamics CRM





与微软合作，共创数字化物联网未来

Partner with Microsoft on your IoT Journey

微软云计算平台



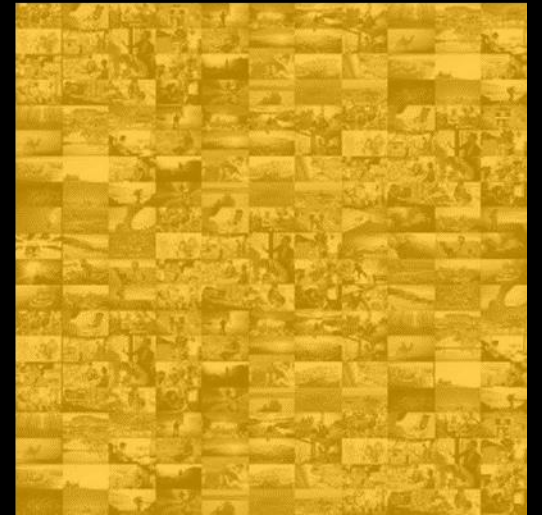
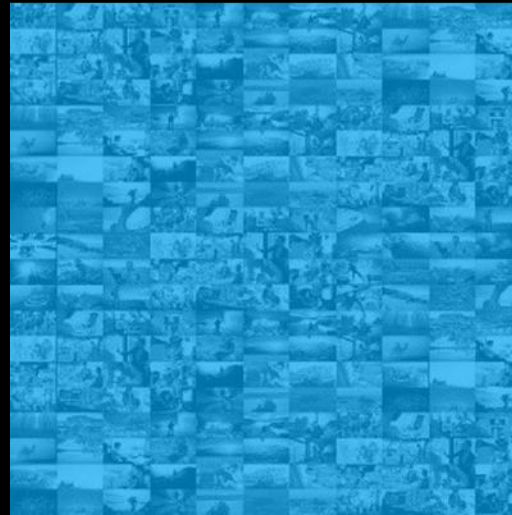
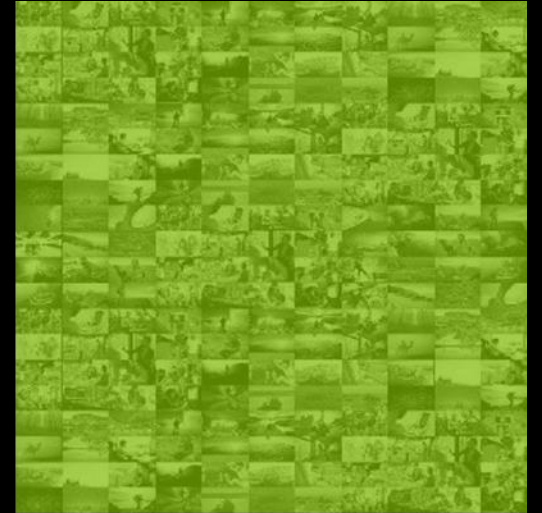
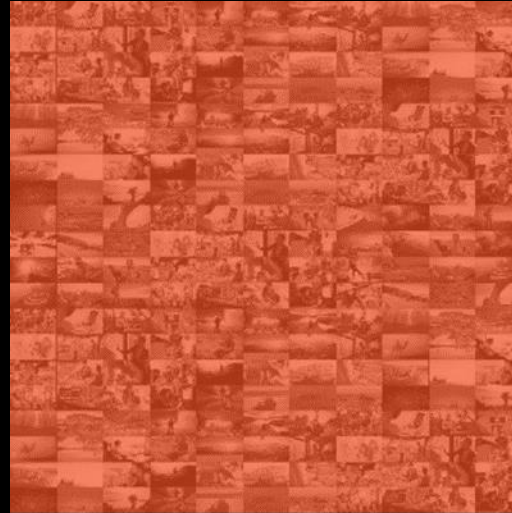
Go Global

Go China

全球合作伙伴生态系统支持

Microsoft mission

Empower every person and
every organization on the
planet to achieve more





IoT in Action

#IoTinActionMS