



IoT in Action



Unlocking IoT's Potential

Graziano Galante

IoT Technical Sales Manager

Microsoft EMEA

IoT in Action



IoT is a Business revolution fueled by Technology



10 billion connected
devices by 2020

- Gartner

1.5 million/
hour

new devices
coming online

IDC

180 zettabytes of
digital data by 2025



How can I quickly generate business insights from sensor values?

How can I support my line of business with intelligent automation?

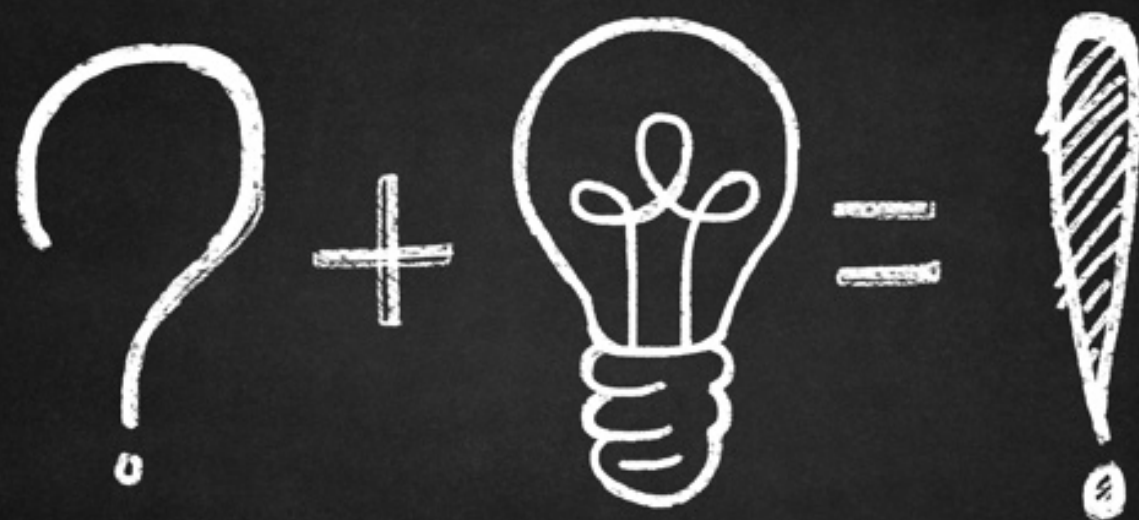
How can I integrate existing IoT data into my business processes?

How can I use IOT data to develop custom IoT-enabled business applications?

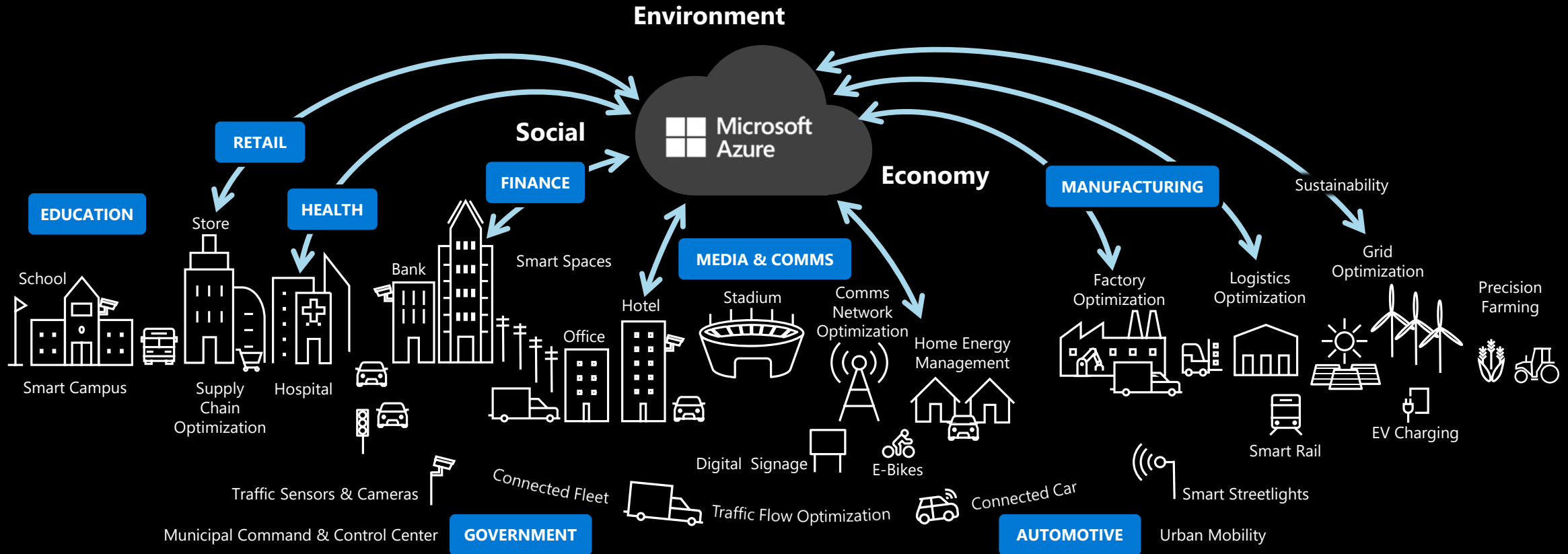
How can I drive my business decisions based on real-time sensor data?

How can I integrate sensors and devices from different vendors?

How do I make sense out of time series data?



Microsoft invests \$5 billion in IoT



Our goal is to give every customer the ability to **transform their businesses**
From "simplifying IoT" to "democratizing IoT"

Azure: Just where our Customers are



Global



55 Azure regions

Largest geographical footprint of any cloud provider with more than **55** Azure regions



Secure



Microsoft Cyber Defense Operations Center

>3,500 full-time security professionals

6.5 trillion global signals daily

\$1 billion annual cybersecurity investment



Compliant

91

Compliance offerings

GLOBAL

- ISO 27001:2013
- ISO 27017:2015
- ISO 27018:2014
- ISO 22301:2012
- ISO 9001:2015
- ISO 20000-1:2011
- SOC 1 Type 2
- SOC 2 Type 2
- SOC 3
- CIS Benchmark
- CSA STAR Certification
- CSA STAR Attestation
- CSA STAR Self-Assessment
- WCAG 2.0 (ISO 40500:2012)

U.S. GOVT

- FedRAMP High
- FedRAMP Moderate
- EAR
- ITAR
- DoD DISA SRG Level 5
- DoD DISA SRG Level 4
- DoD DISA SRG Level 2
- DFARS
- DoE 10 CFR Part 810
- NIST SP 800-171

INDUSTRY

- PCI DSS Level 1
- GLBA (US)
- FFIEC (US)
- Shared Assessments (US)
- SEC 17a-4 (US)
- CFTC 1.31 (US)
- FINRA 4511 (US)
- SOX (US)
- 23 NYCRR 500 (US)
- OSFI (Canada)
- FCA + PRA (UK)
- APRA (Australia)
- FINMA (Switzerland)
- FSA (Denmark)
- RBI + IRDAI (India)
- MAS + ABS (Singapore)
- NBB + FSMA (Belgium)
- AFM + DNB (Netherlands)
- AMF + ACPR (France)
- KNF (Poland)
- European Banking Authority (EBA)
- FISC (Japan)
- HIPAA BAA (US)
- HITRUST Certification
- GxP (FDA 21 CFR Part 11)
- MARS-E (US)
- NHS IG Toolkit (UK)

REGIONAL

- Argentina PDPA
- Australia IRAP Unclassified
- Australia IRAP PROTECTED
- Canada Privacy Laws
- China GB 18030:2005
- China DJCP (MLPS) Level 3
- China TRUCS / CCCPPF
- EU EN 301 549
- EU ENISA IAF
- EU Model Clauses
- EU – US Privacy Shield
- GDPR
- Germany CS
- Germany IT-Grundschutz workbook
- India MeitY
- Japan CS Mark Gold
- Japan My Number Act
- Netherlands BIR 2012
- New Zealand Gov CIO Framework
- Singapore MTCS Level 3
- Spain ENS High
- Spain DPA
- UK Cyber Essentials Plus
- UK G-Cloud
- UK PASF

IoT solution principles

Cloud



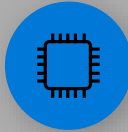
Globally available,
unlimited compute
resources

IoT



Harnessing signals from
sensors and devices,
managed centrally
by the cloud

Intelligent Edge



Intelligence offloaded from
the cloud to IoT devices

Artificial Intelligence



Breakthrough intelligence
capabilities, in the cloud
and at the edge

Business Value



Transform your business with Azure IoT



Comprehensive
Broadest portfolio



Simple
Fastest time to value



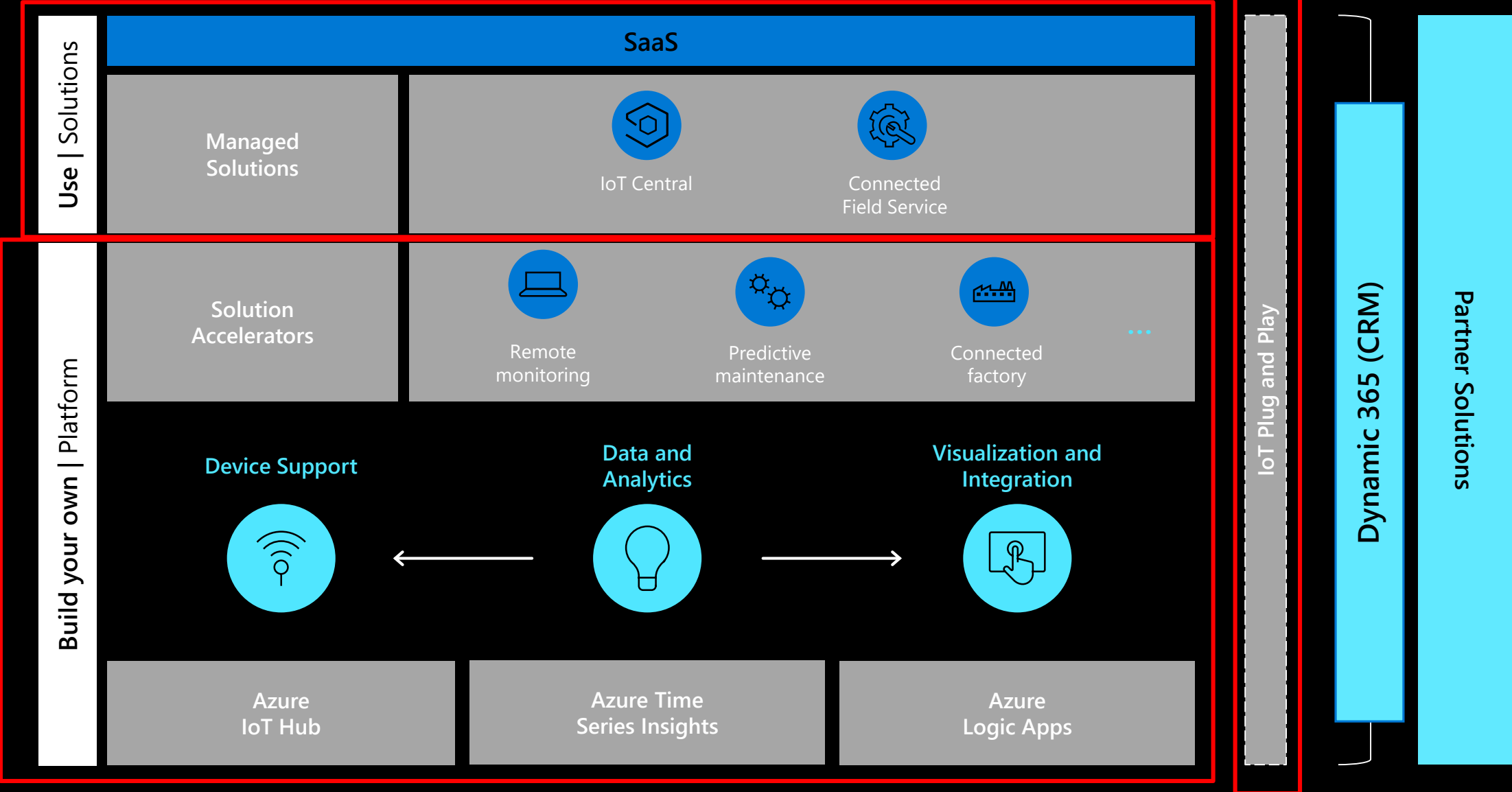
Secure
Industry leading end-to-end

Intelligent cloud

Intelligent Edge

Flexible and Secure Platform

Cloud Platform





IoT Central & Plug and Play DEMO

Maarten Struys

Sr. IoT Technical Specialist

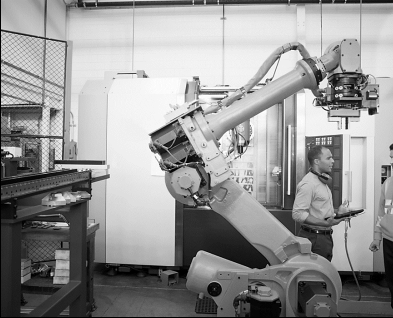
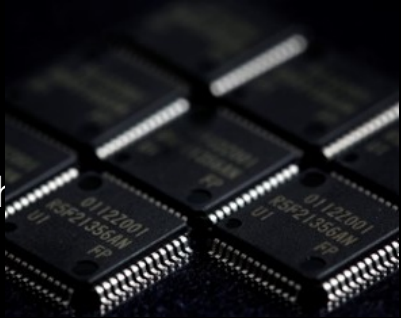
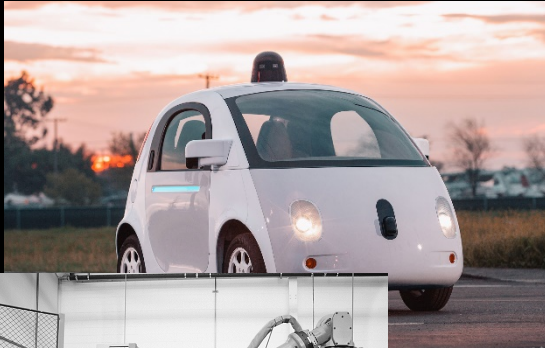
IoT in Action



Intelligent Edge



What is the Intelligent edge?



Devices + Sensors

Sensors to interactive

Integrated platform

Global scale processing

IoT devices
Azure IoT Device SDK

Device security
Azure Sphere

Edge devices
Azure IoT Edge

Edge appliances
Azure Stack Edge

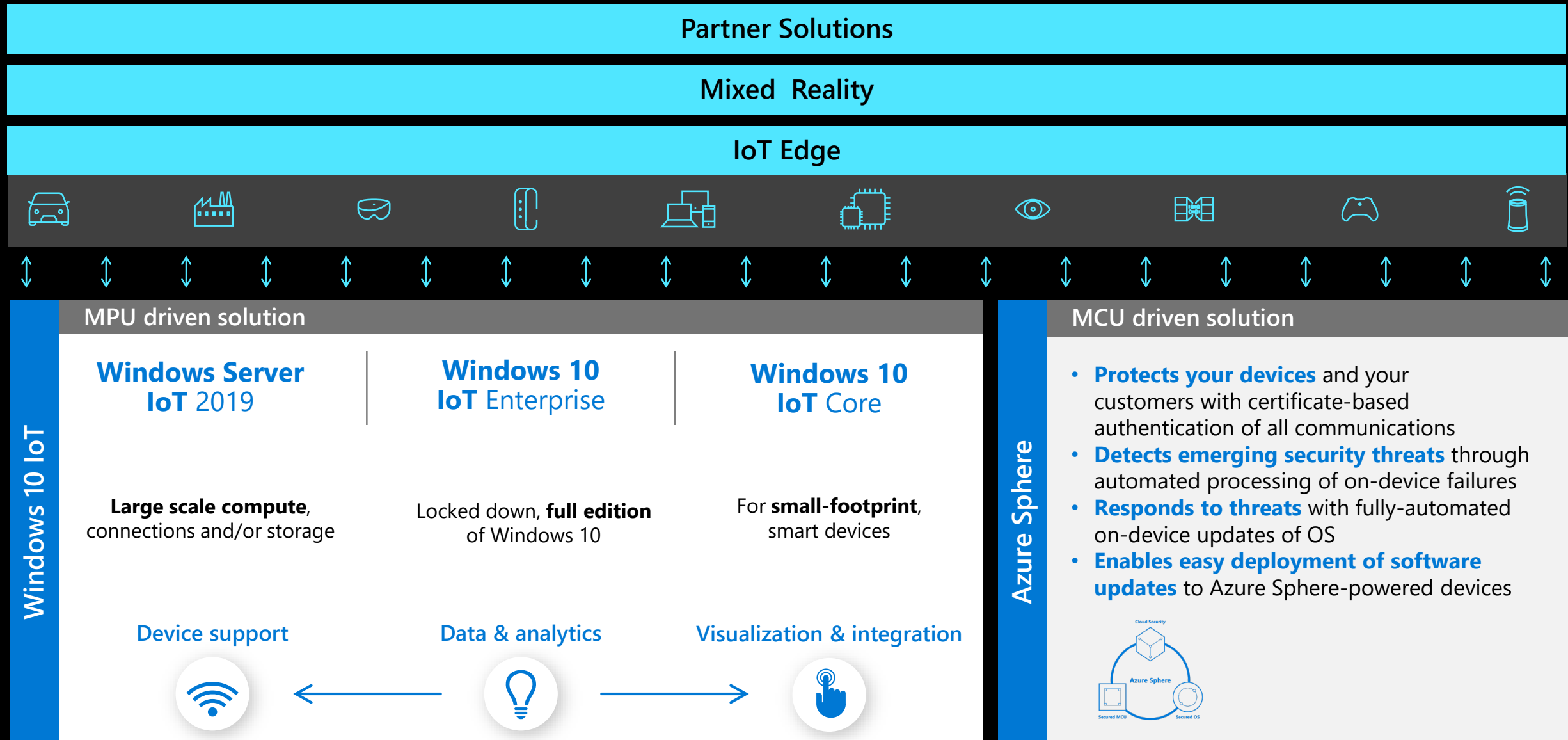
On-premises platform
Azure Stack Hub

Hyperscale cloud
Edge Regions

Flexible and Secure Platform



Rich device platform to power the intelligent edge and beyond



Why choose Microsoft?

Panel discussion: Cloud & Edge | Security | Windows IoT



Maarten Struys
Sr. Technical Specialist
Microsoft



Juergen Schwertl
Sr. Technical Specialist
Microsoft



Graziano Galante
IoT Solution Architects
Manager, EMEA Market
Microsoft

Vielen Dank!

The background is a dark blue gradient with a complex, glowing network of lines and dots. The lines are thin and connect various points, creating a mesh-like structure that flows across the frame. The dots are small, bright blue and green, and some are larger and more prominent than others. The overall effect is a sense of digital connectivity and data flow.